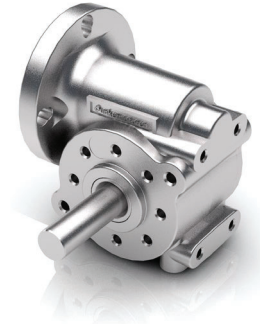








- » Housing made of high-tensile die-cast
- » Worm wheel made of brass
- » Standard output shaft with both sides ball bearings, shaft output to the left
- » Shaft output to the right or double shaft output on demand

- » Gehäuse aus hochfestem Druckguss
- » Schneckenrad aus Messing
- » Getriebe Ausgangswelle ist serienmäßig beidseitig kugellagert und einseitig links ausgeführt
- » Optional Wellenausgang rechts oder mit beidseitigem Wellenausgang



					
Low noise	Lifetime lubrication	Low temperature	Self-locking ratios available	Protection class (up to) IP 54	Vibration resistance

Data/ Technische Daten | SG 45

Reduction ratio/ Untersetzungsverhältnis		5	10	15	25	30	40	50	75
Efficiency/ Wirkungsgrad	%	79	69	60	48	43	30	38	23
Continuous torque/ Dauerdrehmoment	Nm	<i>up to/ bis 0.75</i>							
Weight of gearbox/ Getriebege wicht	kg	0.2							
Axial load / radial load/ Axiallast / Radiallast	N	100 / 200							

Dimensions in mm/ Maßzeichnung in mm

