





- » Compact, industry compatible planetary gearbox
 - » High efficiency
 - » Ring gear, planetary carriers and sun wheels made of steel
 - » Output shaft with double ball bearings
 - » All stages have straight toothing
- » Kompaktes, industrietaugliches Planetengetriebe
 - » Hoher Wirkungsgrad
 - » Hohlrad, Planetenträger und Sonnenritzel aus Stahl
 - » Ausgangswelle doppelt kugelgelagert
 - » Alle Getriebestufen gerade verzahnt ausgeführt






 Lifetime lubrication



 Food grade lubrication



 Low temperature lubrication


 High efficiency


 High torque


 Special surface available

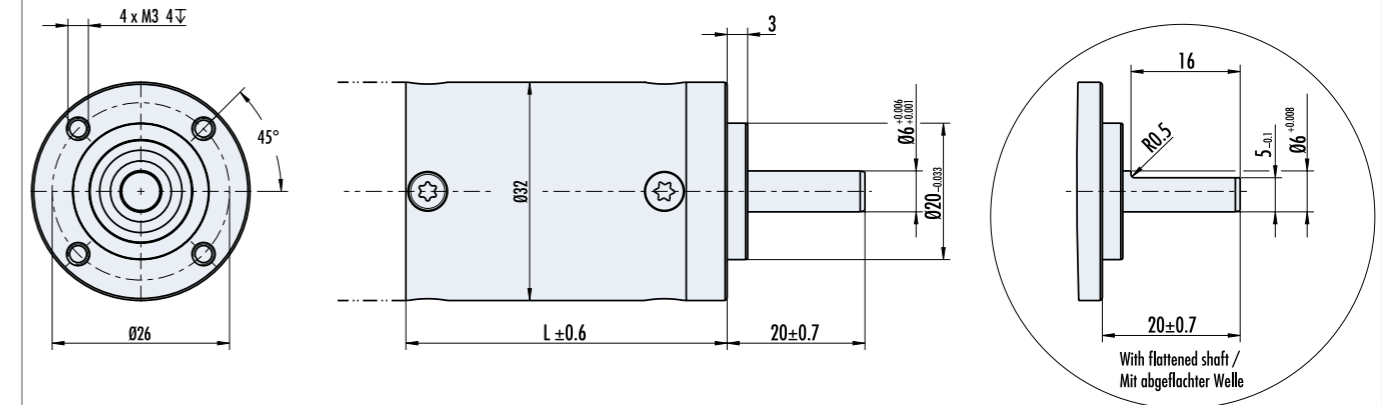

 Protection class (up to)


 Vibration resistance

Data/ Technische Daten PLG 32 - Ring gear made of steel/ Hohlrad aus Stahl																			
Reduction ratio/ Untersetzungsverhältnis	-	4.5	6.25	8	-	15	20.25	28.12	36	39	50	91.12	126.56	162	225	288	312.5	400	512
Efficiency/ Wirkungsgrad	%	90			81			73											
Number of stages/ Stufenzahl	-	1			2			3											
Continuous torque/ Dauerdrehmoment	Nm	0.4			1.5			4											
Weight of gearbox/ Getriebegewicht	kg	0.14			0.18			0.23											
Axial load/ radial load */ Axiallast/ Radiallast *	N	30 / 100			30 / 100			30 / 100											

* From center of shaft/ Ab Wellenmitte

Dimensions in mm/ Maßzeichnung in mm



Depending on the motor type, the mounting pattern may be rotated by 45°. Please ask us for details/
Je nach Motortyp kann die Anbaulage um 45° gedreht sein. Bitte fragen Sie uns nach Details.

Length/ Länge L mm	
1-stufig/ stage	30
2-stufig/ stage	40
3-stufig/ stage	50