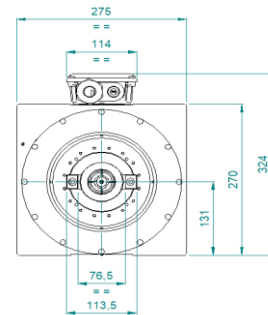
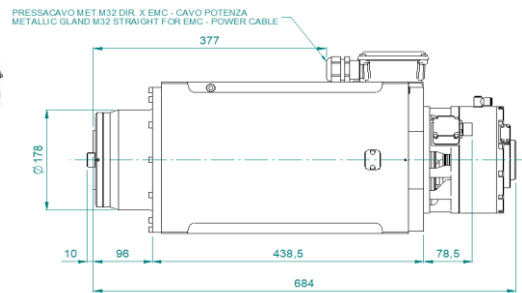
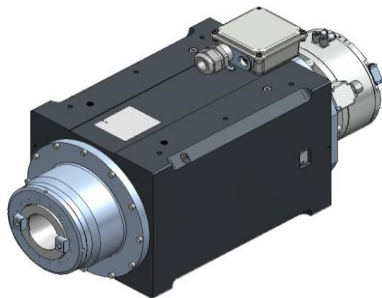
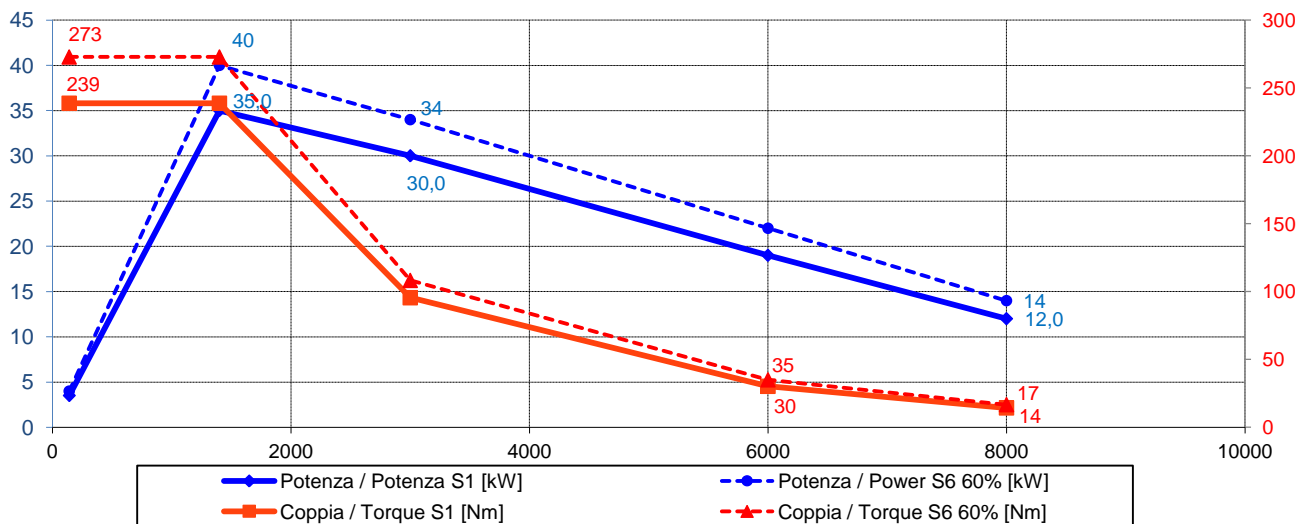




Electrospindle ATC 35kW 1400 rpm SXL-2 35/1.4 8 NC I50 CB EN H



Prestazioni - Performances



Specifiche tecniche/ Technical Specifications

Tipologia elettromandrino / Electrospindle type

Attacco utensile / Tool interface

Velocità rotazione max / Max speed

Raffreddamento / cooling

Lubrificazione cuscinetti / Bearings lubrication

Connessione pneumatiche / Pneumatic connection

Potenza max. (S1 - S6) / Max. Power.(S1 - S6)

Coppia max. (S1 - S6) / Max. Torque (S1 - S6)

Corrente (S1 - S6) / Current (S1 - S6)

Tensione / Voltage

Rotazione / Rotation

Azionamento / Supply

Sensoristica / Sensors

Encoder

Peso / Weight

Asincrono-6 poli / Asynchronous-6 poles

ISO 50

8000 rpm (10000 rpm OPT.)

Liquido / Liquid

Grasso a vita / Grease long life

Sblocco uten. / Release. tool: Ø8 4.5-6.5 bar

Blocco/Lock tool: Ø6 4.5-6.5 bar

Pressurizzazione / Air seal.: Ø4 6-6.5 bar

Ingresso acqua per giunto/Joint water inlet : G1/4

35 kW @1400 rpm (S1) / 40 kW @ 1400 rpm (S6)

240 Nm (S1) / 270 Nm (S6)

72 A (S1) / 86 A (S6)

380 V

CW - CCW

Con inverter / By inverter

S1 Afferraggio utensile / S1 Tool lock

S2 Pinza aperta / S2 Open clamp

S3 Rotazione albero / S3 Spindle rotation

S5 Ritorno pistone / S5 Piston back

TTL 5V 1200cpr (+tacca rif.) /TTL 5V 1200cpr (+ref.mark)

200 kg

Dati tecnici non impegnativi, Hiteco, si riserva il diritto di modificarli senza darne preavviso.

A termine di legge è rigorosamente vietato riprodurre o comunicare a terzi il contenuto del presente documento.

Technical Data are purely indicative and Hiteco, reserves the right to make changes without prior notice.

According to the law it is strictly forbidden to reproduce or transmit to third parties the content of this document.