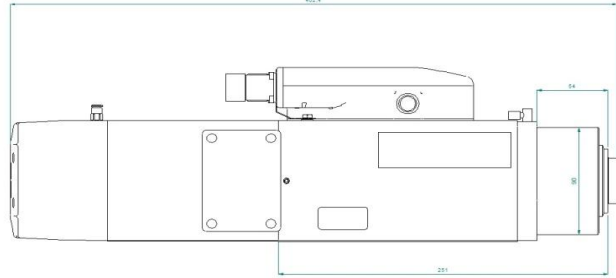
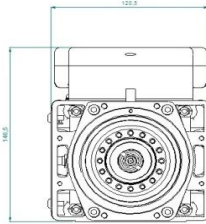
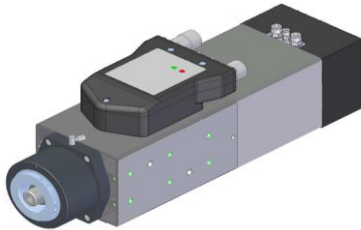


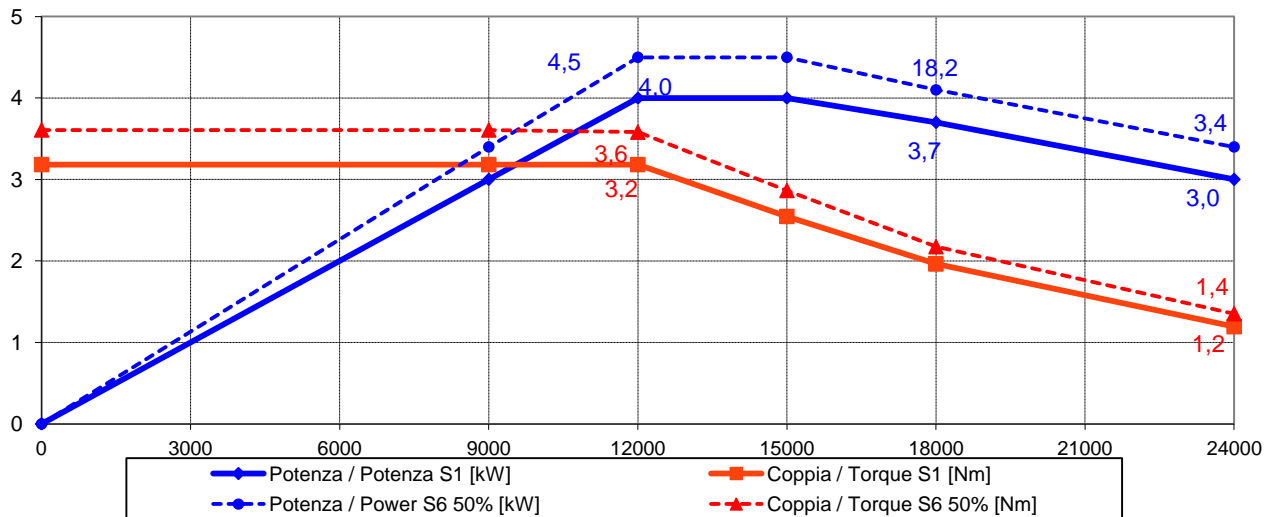


**Electrospindle ATC 4 kW 24.000 rpm
QD-1F 4/12 24 ISO30 NC CC**

QD.200.A03.00



Prestazioni - Performances



Specifiche tecniche/ Technical Specifications

Tipologia elettromandrino / Electrospindle type

Asincrono-4 poli / Asynchronous-4 poles

Attacco utensile / Tool interface

ISO 30

Velocità rotazione max / Max speed

24000 rpm

Raffreddamento / cooling

Aria con elettroventola 24V DC / Air by electrofan 24V DC

Cuscinetti / Ball bearings

Ceramici / Ceramic

Lubrificazione cuscinetti / Bearings lubrication

Grasso a vita / Grease long life

Connessione pneumatiche / Pneumatic connection

Sblocco uten. / Release. tool: Ø6 6-6.5 bar

Pressurizzazione / Air seal.: Ø4, 0.5-1 bar

Blocco uten. / Lock tool: Ø4 6-6.5 bar

Potenza max. (S1 - S6) / Max. Power.(S1 - S6)

4 kW @12000 Rpm (S1) / 4.5 kW @ 12000 Rpm (S6)

Coppia max. (S1 - S6) / Max. Torque (S1 - S6)

3,2 Nm (S1) / 3,6 Nm (S6)

Corrente (S1 - S6) / Current (S1 - S6) 380V

8,6 A (S1) / 10,6 A (S6)

Tensione / Voltage

380 V

Rotazione / Rotation

CW - CCW

Azionamento / Supply

Con inverter / By inverter

Sensoristica / Sensors

S1 Afferraggio utensile / S1 Tool lock

S2 Pinza aperta / S2 Open clamp

S3 Rotazione albero / S3 Spindle rotation

Peso / Weight

25 kg