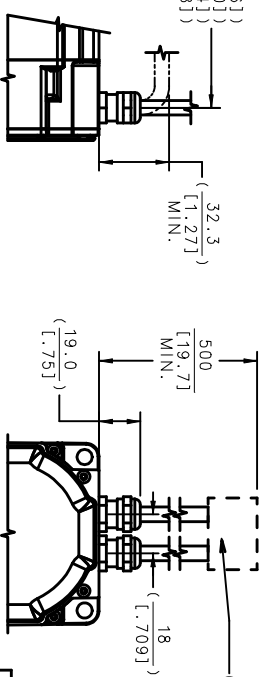


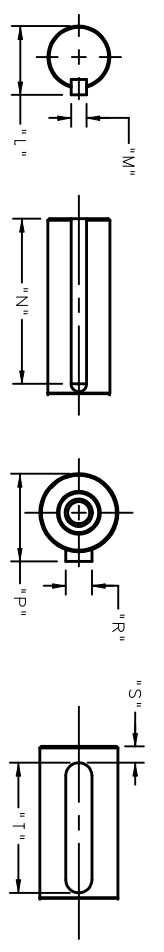
SHOWN WITH "D" CONNECTOR OPTION



SHOWN WITH "M OR P" CONNECTOR OPTIONS

MOUNTING CODE	"C"	"D"	"E"	"F"	"H"	"J"	"K"	"L"	"M"	"N"	"P"	"R"	"S"	"T"	"U"	"V"	"W"
AC	7 [1.278]	80 -0.032 [2.032]	109 [3.537]	N/A	DS M6 DIN 332	19 -0.032 [0.508]	40.0 [1.577]	N/A	N/A	N/A	21.5 -0.13 [0.846]	6 -0.09 [0.236]	4.09 [1.039]	32 -0.30 [0.762]	0.040 [0.0015]	0.080 [0.0031]	0.080 [0.0031]
AN	7 [1.278]	80 -0.032 [2.032]	109 [3.537]	N/A	DS M6 DIN 332	19 -0.032 [0.508]	40.0 [1.577]	N/A	N/A	N/A	21.5 -0.13 [0.846]	6 -0.09 [0.236]	4.09 [1.039]	32 -0.30 [0.762]	0.040 [0.0015]	0.080 [0.0031]	0.080 [0.0031]
BK	5.54 [1.218]	73.025 -0.091 [2.870]	98.43 [3.875]	N/A	DS M6 DIN 332	15.875 -0.013 [0.625]	52.40 +/- 0.79 [2.063 +/- 0.31]	17.92 -0.43 [0.706 +/- 0.017]	4.762 -0.091 [0.1875 +/- 0.003]	34.93 +/- 0.25 [1.375 +/- 0.010]	N/A	N/A	N/A	N/A	0.040 [0.0015]	0.080 [0.0031]	0.080 [0.0031]
CC	5.54 [1.218]	73.025 -0.091 [2.870]	90 [3.543]	N/A	DS M6 DIN 332	19 -0.032 [0.508]	40.0 [1.577]	N/A	N/A	N/A	21.5 -0.13 [0.846]	6 -0.09 [0.236]	4.09 [1.039]	32 -0.30 [0.762]	0.040 [0.0015]	0.080 [0.0031]	0.080 [0.0031]
CN	5.54 [1.218]	80 -0.032 [2.032]	109 [3.543]	N/A	DS M6 DIN 332	19 -0.032 [0.508]	40.0 [1.577]	N/A	N/A	N/A	21.5 -0.13 [0.846]	6 -0.09 [0.236]	4.09 [1.039]	32 -0.30 [0.762]	0.040 [0.0015]	0.080 [0.0031]	0.080 [0.0031]

KEYWAY DETAILS



CAUTION: METRIC DRAWING - ENGLISH DIMENSIONS ARE REFERENCE ONLY

TOLERANCES UNLESS OTHERWISE SPECIFIED ARE AS FOLLOWS:

SCALE	5/8	ONE SIZE C	THIRD ANGLE PROJECTION
SO NOT SCALE PRINT			

THIS DRAWING COVERS A PRODUCT THAT IS THE PROPERTY OF DANMOR. THIS DRAWING IS NOT TO BE REPRODUCED OR TRANSMITTED IN ANY FORM OR BY ANY MEANS, ELECTRONIC OR MECHANICAL, INCLUDING PHOTOCOPYING, RECORDING, OR BY ANY INFORMATION STORAGE AND RETRIEVAL SYSTEM.

DATE: 06/26/03

REVISIONS: 06/26/03

RELEASE NO: XXXXXX

STANDARD OUTLINE

AKM4