

D Gearbox

Parallel Gearbox

GType General Box Type Gearbox

Frame Size 60mm Model: 6GBD □ MH – Max. Permissible Torque

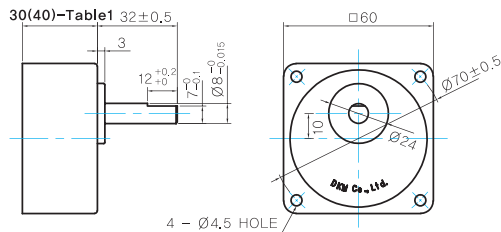
* These are reference figures when the Gearbox is attached to the induction motor.

Motor Output	Gear Ratio		3	3.6	5	6	7.5	9	10	12.5	15	18	20	25	30	36	40	50	60	75	90	100	120	150	180	200	250
	60Hz	r/min	600	500	360	300	240	200	180	144	120	100	90	72	60	50	45	36	30	24	20	18	15	12	10	9	7.2
	50Hz		500	417	300	250	200	166	150	120	100	83	75	60	50	41	37	30	25	20	16	15	12	10	8	7.5	6
6W	60Hz	kgfcm	1.0	1.3	1.7	2.1	2.6	3.1	3.5	4.4	5.2	6.3	6.3	7.9	9.5	11.3	12.6	14.3	17.1	21.4	25.7	28.6	30.0	30.0	30.0	30.0	30.0
	50Hz		1.2	1.4	2.0	2.3	2.9	3.5	3.9	4.9	5.9	7.0	7.1	8.8	10.6	12.7	14.1	16.0	19.2	24.0	28.8	30.0	30.0	30.0	30.0	30.0	30.0

- 1) Enter the gear ratio in the box (□) within the Gearbox model name.
- 2) A colored background indicates gear shaft rotation in the same direction as the motor shaft; a white background indicates rotation in the opposite direction.
- 3) The rotating speed is calculated by dividing the motor's synchronous speed (50Hz: 1,500r/min, 60Hz: 1,800r/min) by the gear ratio.
The actual speed is 2~20% less than the displayed value, depending on the size of the load.
- 4) Calculation of N.m \approx kgfcm X 0.98

Dimensions

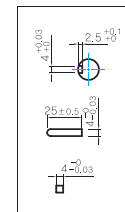
● Model: 6GBD □ MH



● GEARBOX OUTPUT SHAFT

MODEL	SPEC
D-CUT TYPE	

● KEY SPEC



WEIGHT

Model	WEIGHT(Kg)
6GBD3MH ~ 6GBD18MH	0,3
6GBD20MH ~ 6GBD40MH	0,32
6GBD50MH ~ 6GBD250MH	0,34

● 30(40)-Table1

SIZE(mm)	GEAR RATIO
30	6GBD3MH – 6GBD18MH
40	6GBD20MH – 6GBD250MH

Frame Size 70mm Model: 7GBK □ BMH – Max. Permissible Torque

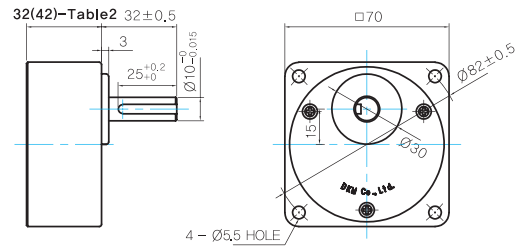
* These are reference figures when the Gearbox is attached to the induction motor.

Motor Output	Gear Ratio		3	3.6	6	7.5	9	12.5	15	18	25	30	36	50	60	75	90	100	120	150	180
	60Hz	r/min	600	500	300	240	200	144	120	100	72	60	50	36	30	24	20	18	15	12	10
	50Hz		500	416	250	200	166	120	100	83	60	50	41	30	25	20	16	15	12.5	10	8.3
6W	60Hz	kgfcm	1.4	1.6	2.7	3.4	4.1	5.7	6.8	8.2	10.3	12.4	13.5	18.7	22.4	28.1	33.7	37.4	44.9	50.0	50.0
	50Hz		1.7	2.1	3.5	4.4	5.2	7.3	8.7	10.5	13.1	15.8	17.1	23.8	28.6	35.7	42.8	47.6	50.0	50.0	50.0
10W	60Hz	kgfcm	1.7	2.1	3.4	4.3	5.2	7.2	8.6	10.3	12.9	15.5	16.9	23.5	28.2	35.2	42.2	46.9	50.0	50.0	50.0
	50Hz		2.1	2.5	4.2	5.2	6.3	8.7	10.5	12.5	15.8	18.9	20.6	28.6	34.3	42.8	50.0	50.0	50.0	50.0	50.0
15W	60Hz	kgfcm	2.5	3.0	5.0	6.2	7.5	10.4	12.5	14.9	18.8	22.5	24.5	34.0	40.8	50.0	50.0	50.0	50.0	50.0	50.0
	50Hz		3.5	4.2	7.0	8.7	10.5	14.5	17.4	20.9	26.3	31.5	34.3	47.6	50.0	50.0	50.0	50.0	50.0	50.0	50.0

- 1) Enter the gear ratio in the box (□) within the Gearbox model name.
- 2) A colored background indicates gear shaft rotation in the same direction as the motor shaft; a white background indicates rotation in the opposite direction.
- 3) The rotating speed is calculated by dividing the motor's synchronous speed (50Hz: 1,500r/min, 60Hz: 1,800r/min) by the gear ratio.
The actual speed is 2~20% less than the displayed value, depending on the size of the load.
- 4) Calculation of N.m \approx kgfcm X 0.98

Dimensions

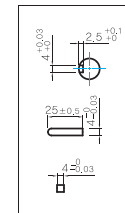
● Model: 7GBK□BMH



● GEARBOX OUTPUT SHAFT

MODEL	SPEC
KEY TYPE	

● KEY SPEC



● WEIGHT

Model	WEIGHT(Kg)
7GBK3BMH ~ 7GBK18BMH	0,36
7GBK25BMH ~ 7GBK30BMH	0,44
7GBK36MH ~ 7GBK180MH	0,5

● 32(42)-Table2

SIZE(mm)	GEAR RATIO
32	7GBK3BMH - 7GBK18BMH
42	7GBK25BMH - 7GBK180BMH

Frame Size 80mm Model: 8GBK□BMH Max. Permissible Torque

* These are reference figures when the Gearbox is attached to the induction motor.

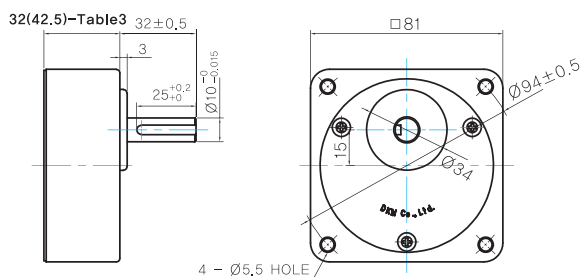
Motor Output	Gear Ratio		3	3.6	5	6	7.5	9	12.5	15	18	25	30	36	
	60Hz	50Hz	r/min		600	500	360	300	240	200	144	120	100	72	60
15W	60Hz	kgfcm	3.0	3.6	5.0	6.0	7.5	9.0	12.5	14.9	17.9	22.5	27.0	29.4	
	50Hz		3.5	4.2	5.8	7.0	8.7	10.5	14.5	17.4	20.9	26.3	31.5	34.3	
25W	60Hz	kgfcm	4.5	5.4	7.5	9.0	11.2	13.4	18.7	22.4	26.9	33.8	40.5	44.1	
	50Hz		5.5	6.6	9.1	11.0	13.7	16.4	22.8	27.4	32.9	41.3	49.5	53.9	

Motor Output	Gear Ratio		40	50	60	75	90	100	120	150	180	200	250	300	360	
	60Hz	50Hz	r/min		45	36	30	24	20	18	15	12	10	9	7	6
15W	60Hz	kgfcm	32.6	40.8	49.0	61.2	73.4	80.0	80.0	80.0	80.0	80.0	80.0	80.0	80.0	
	50Hz		38.1	47.6	57.1	71.4	80.0	80.0	80.0	80.0	80.0	80.0	80.0	80.0	80.0	
25W	60Hz	kgfcm	49.0	61.2	73.4	80.0	80.0	80.0	80.0	80.0	80.0	80.0	80.0	80.0	80.0	
	50Hz		59.8	74.8	80.0	80.0	80.0	80.0	80.0	80.0	80.0	80.0	80.0	80.0	80.0	

- 1) Enter the gear ratio in the box (□) within the Gearbox model name.
- 2) A colored background indicates gear shaft rotation in the same direction as the motor shaft; a white background indicates rotation in the opposite direction.
- 3) The rotating speed is calculated by dividing the motor's synchronous speed (50Hz: 1,500r/min, 60Hz: 1,800r/min) by the gear ratio.
The actual speed is 2~20% less than the displayed value, depending on the size of the load.
- 4) Calculation of N.m \approx kgfcm X 0.98

Dimensions

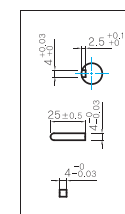
● Model: 8GBK□BMH



● GEARBOX OUTPUT SHAFT

MODEL	SPEC
KEY TYPE	

● KEY SPEC



● WEIGHT

Model	WEIGHT(Kg)
8GBK3BMH ~ 8GBK18BMH	0,48
8GBK25BMH ~ 8GBK30BMH	0,61
8GBK36BMH ~ 8GBK180BMH	0,67
8GBK200BMH ~ 8GBK360BMH	0,63

● 32(42.5)-Table3

SIZE(mm)	GEAR RATIO
32	8GBK3BMH - 8GBK18BMH
42.5	8GBK25BMH - 8GBK360BMH

