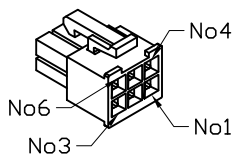
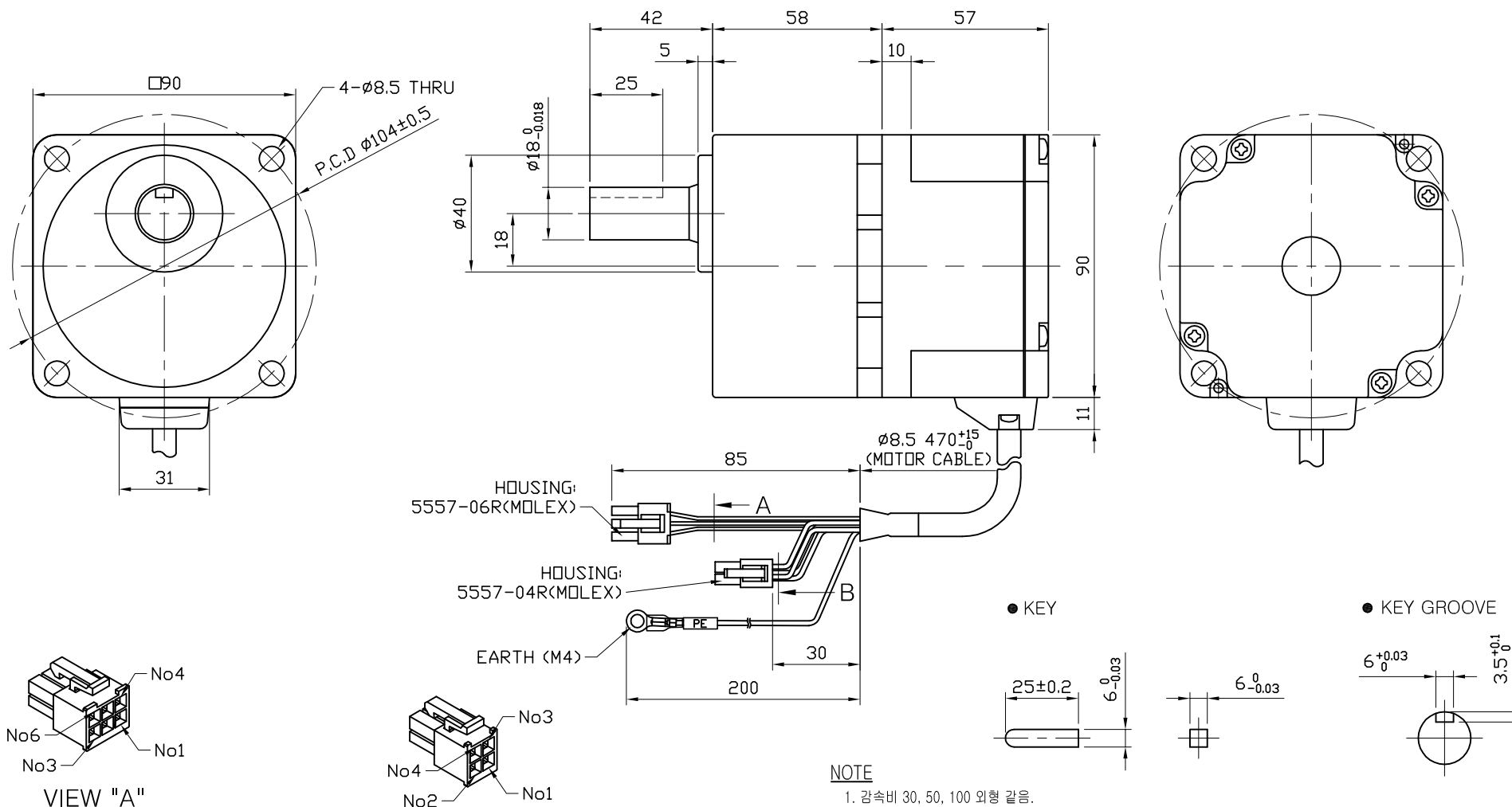


# ESM-90-H-120-ESG+90-H-R30-P

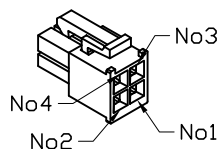
NO.	COUNT	REVISIONS	DATE (YY/MM/DD)	APPROVED
①	x		' / /	
②	x		' / /	



VIEW "A"

- PIN MAP (MOLEX 5557-06R)

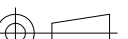

PIN NO.	COLOR	WIRE SPEC	SIGNAL
1	YELLOW	UL3266 AWG24	Vcc
2	BLACK	(DRAIN)	-
3	GREEN	UL3266 AWG24	Ground
4	BROWN	UL3266 AWG24	Hu
5	WHITE	UL3266 AWG24	Hv
6	ORANGE	UL3266 AWG24	Hw



VIEW "B"

- PIN MAP (MOLEX 5557-04R)

PIN NO.	COLOR	WIRE SPEC	SIGNAL
1	-	-	-
2	BLUE	UL3266 AWG22	U
3	GRAY	UL3266 AWG22	W
4	PURPLE	UL3266 AWG22	V

<div>UNLESS OTHERWISE SPECIFIED, DIMENSIONS ARE IN MILLIMETERS AND TOLERANCES ARE AS FOLLOWS:</div> <div></div> <div>Mechatronics Division</div> <div> <b>FASTECH</b></div>	SIZE A4	SCALE 1/2	QUANTITY 1	MATERIAL	REMARK
	DRAW Kim. Y. C.	DATE (YY/MM/DD) '17/06/09	TITLE Ezi-SPEED		SHEET 1 OF 1
	CHECK Kim. Y. C.	DATE (YY/MM/DD) '17/06/09	MODEL ESM-90-H-120-ESG+90-H-R30-P		
	APPROVED	DATE (YY/MM/DD) / /	DRAWING NO. P91-MO-090-03		