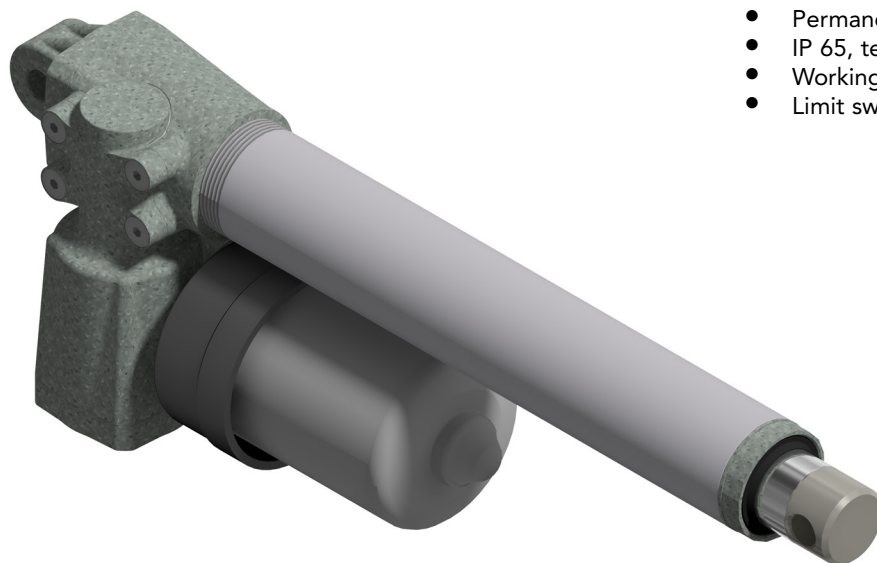


- Permanent magnet motor 12-24 Vdc
- Double worm gearbox
- Acme lead screw or ballscrew (VRS)
- Chrome plated steel push rod
- Permanent grease lubrication
- IP 65, tested according to rule CEI EN 60529
- Working temperature range -10°C +60°C
- Limit switches, potentiometer and encoder on request



ALI2-P (Vdc)						
Fmax (N)	Speed (mm/s)	Version	Motor size	Motor speed (rpm)	Max Current for F max(A) 24Vdc **	Fs % base 5 min.
2400	30	M01	59	4000	9,5	10
3000	15	M03	59	4000	7	30
4200	10	M04	59	4000	9,5	10
4200	7	M05	59	4000	7	30
4200	2.5	M07	59	4000	3	30
4200	0.6	M09	59	4000	1	30

When strokes are longer than 350mm, BRAKEMOTOR IS RECOMMENDED

\*\* For 12 Vdc power supply currents are doubled and loads are 20% lower.

BEFORE OPERATING ACTUATOR MAKE SURE YOU READ AND UNDERSTOOD BASIC OPERATIONAL INSTRUCTIONS SHOWN ON USERMANUALS, AVAILABLE FROM WEBSITE.

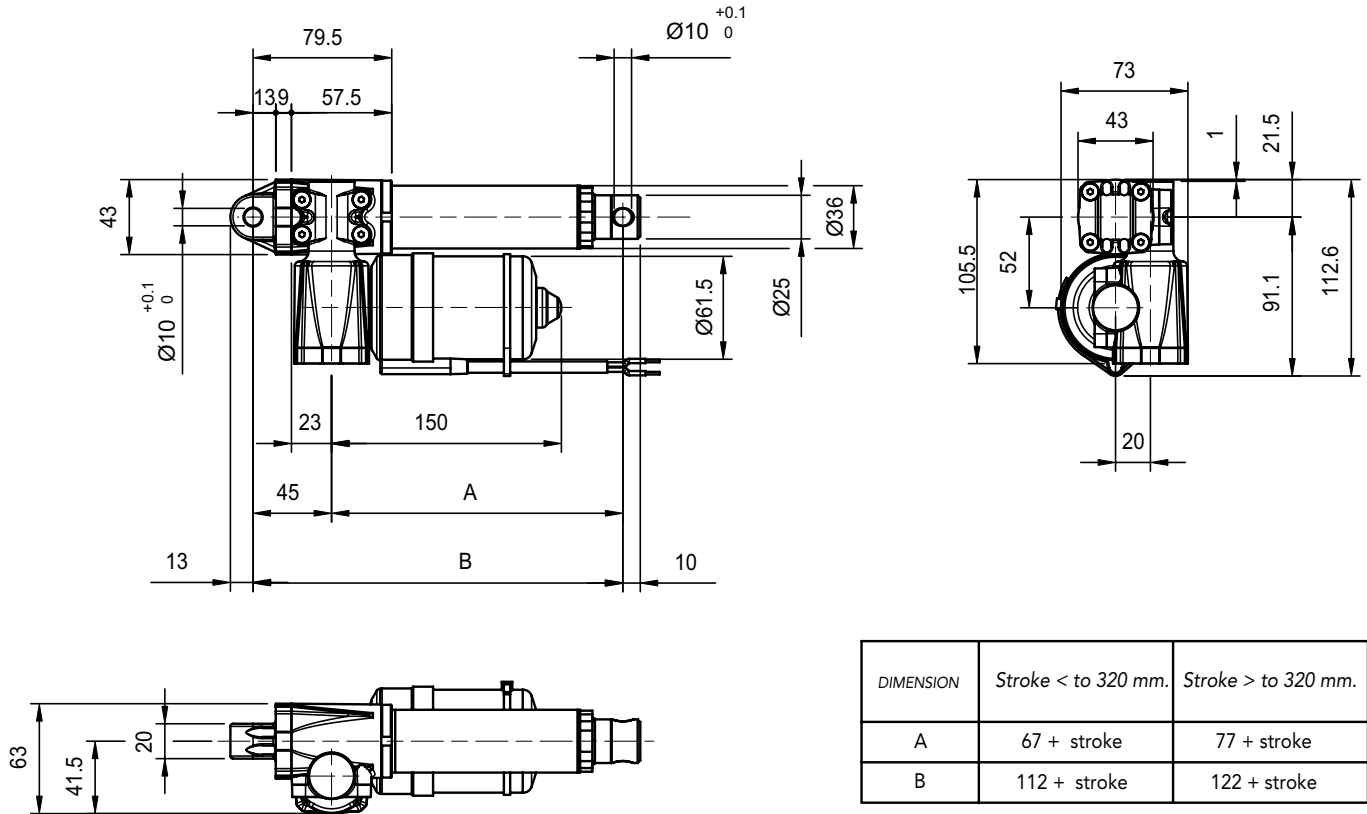
THIS DOCUMENT DISPLAYS MOST TYPICAL STANDARD FEATURES AND SETUPS: CONTACT OUR OFFICES FOR MORE.

ACTUATOR SHALL NOT COME TO MECHANICAL STROKE-END, TO AVOID FAILURES.  
CONSIDER MECVEL's LIMITSWITCHES ( MODEL ALI2-F or ALI2-FCM) OR PUT THEM ON MACHINE/FAME.

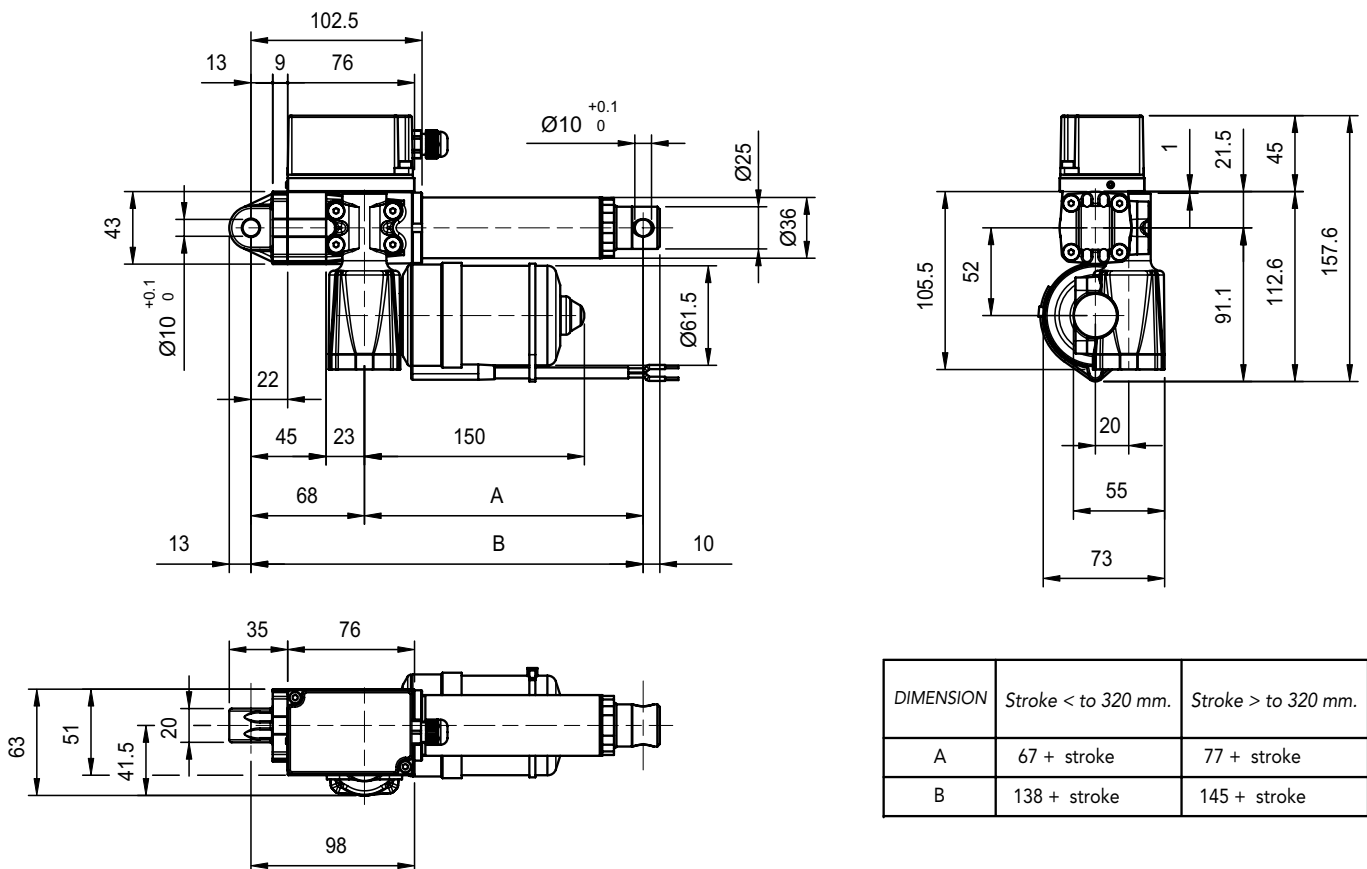


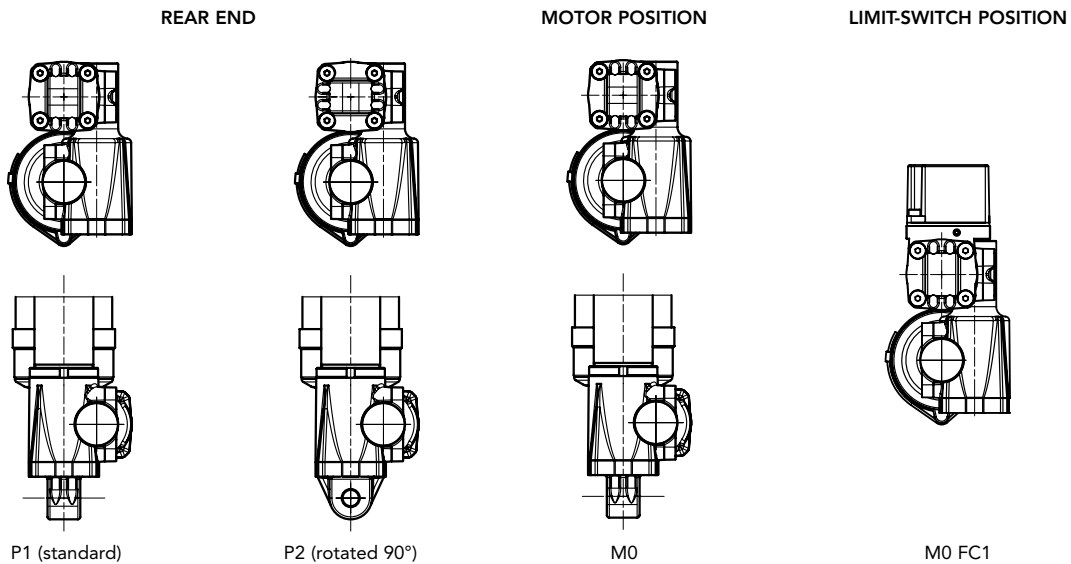
MecVel reserves the right to change products information and/or features without notice; all data contained in this catalogue are purely indicative and not binding for the company.

VERSION WITHOUT LIMITSWITCHES



VERSION WITH LIMITSWITCHES

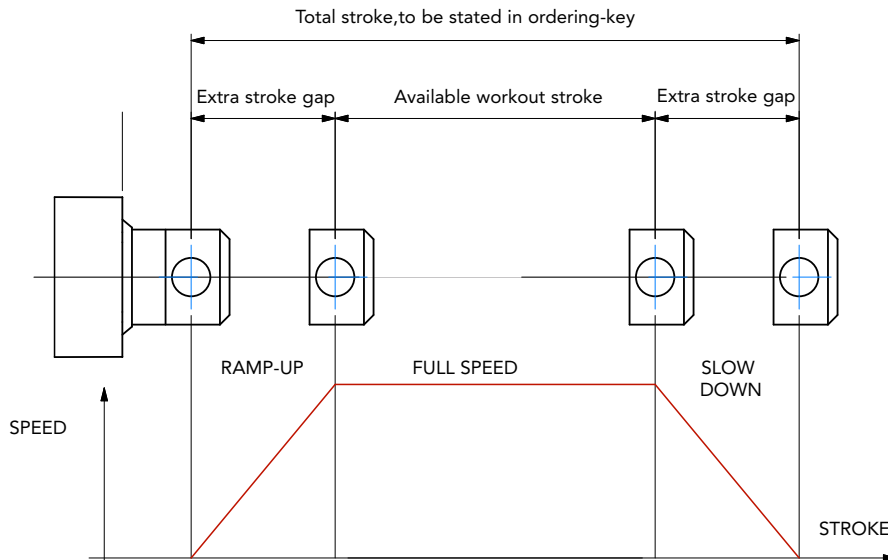




## STROKE SETUP

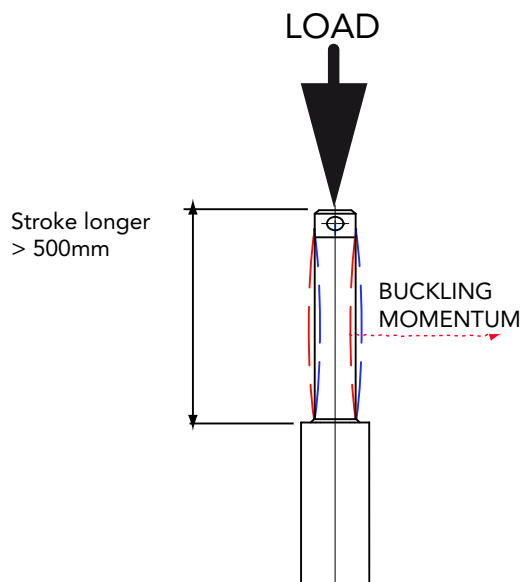
Useful tips for handling stroke and avoid run-on-block collision.

- When stroke is more than 350 mm, add 50 mm extra-stroke as guidance, and put corresponding value in ordering-key.
- **WARNING SPEED-TIMING ALONG STROKELENGTH:** ramps are extremely important when speed is >30 mm/s!!! Inverter or PWM drive recommended!
- The more speed raises the more extra stroke has to raise too.



## BUCKLING

When stroke is longer than 500mm, BUCKLING can be a risk: please check mounting with our offices and/or see usermanuals.



### IMPORTANT:

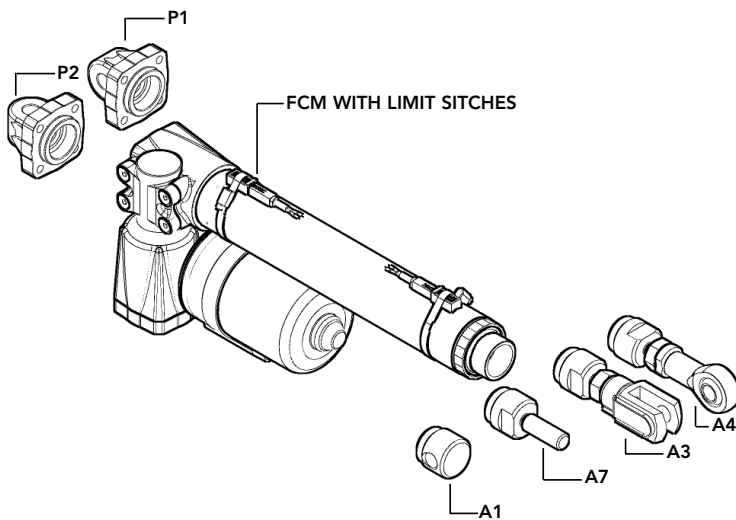
Long strokes, even if load is low, can generate significant buckling momentums, as sketch shows. This happens when actuator is in its all-opened position: that's the reason why we recommend 100 mm extra-stroke. Pushtube will have this 100 mm-portion always inside the overtube, improving guidance against buckling.

For more information on this, contact our office.

ALI2-P/0250/M01/24/M0/E01/2FC1/POT01A/FC1/P1/A1/

<b>MODEL</b>	ALI2-P-FCM		
ALI2-P	ALI2-P-F		
<b>STROKE (mm)</b>	es. 250 mm = 0250		
<b>VERSION</b>	M01 / M03 / M04 / M05 / M07 / M09 M00 = Not standard speed		
<b>MOTOR</b>	12 = 12 Vdc      24 = 24 Vdc		
<b>MOTOR POSITION</b>	M0		
<b>LIMIT SWITCHES</b>	2FC1      None: Leave blank		
<b>POTENTIOMETER</b>	POT01A (1Kohm)      POT10A (10Kohm)      None: Leave blank		
<b>ENCODER</b>	Options pg.76      None: Leave blank		
<b>LIMIT SWITCHES POSITION</b>	FC1      None: Leave blank		
<b>REAR END</b>	P1 = Eyelet (standard)      P2 = Eyelet (90°)		
<b>FRONT END</b>	A1 = Eyelet (standard)      A4 = Rod end      A3 = Yoke + Clip      A7 = M10 male		

**NOTE:** COMPLETE THE ORDERING KEY ADDING THE OPTIONS YOU CAN FIND IN THE "ACCESSORIES AND OPTIONS" SECTION



**Note:** "B" dimension changes according to model

- ALI2-P= See pictures
- ALI2-P stroke > 320 mm = + 10 mm
- ALI2-PF = + 23 mm
- ALI2-PF stroke > 320 mm = +33
- ALI2-P-FCM = + 33 mm
- ALI2-P-FCM stroke > 320 mm = +43 mm
- ALI2-P with safety nut "G" = + 30 mm
- ALI2-P with bellows = + 20mm

