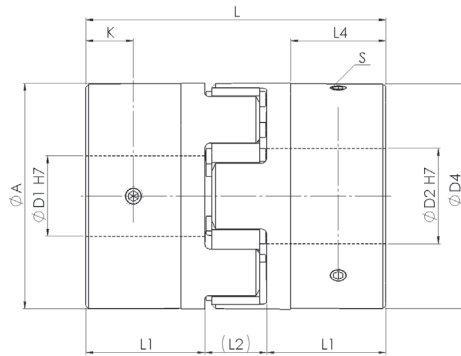


WKE-D/RS Edelstahlasuführung stainless steel version



Version BB

Material:
Nabe - Edelstahl
Standardzahnkranz:
92 ShA
Optional Zahnkranz:
64 ShD, 98 ShA
Passfedernut ØD1 / ØD2:
Nach DIN 6885

Material:
Hub - stainless steel
Standard elastomer insert:
92 ShA
Optional elastomer insert:
64 ShD, 98 ShA
Keyway ØD1 / ØD2:
Acc. to DIN 6885

| WKE-D/RS | | | Abmessungen Dimensions | | | | | | | | ISO 4029 |
|---------------|--------|--------|---------------------------|-----|-----------------------------|-----|----|----|----|----|----------|
| Größe Size | TKN | | L | ØA | Nabe B / Hub B ØD1 / ØD2 | ØD4 | L1 | L2 | L4 | K | S |
| | 92 ShA | 98 ShA | | | | | | | | | |
| | [Nm] | | [mm] | | | | | | | | |
| 19 | 10 | 17 | 66 | 40 | 6 - 25 | - | 25 | 16 | - | 10 | M5 |
| 24 | 35 | 60 | 78 | 55 | 8 - 35 | - | 30 | 18 | - | 10 | M5 |
| 28 | 95 | 160 | 90 | 65 | 10 - 40 | - | 35 | 20 | - | 15 | M6 |
| 38 | 190 | 325 | 114 | 80 | 14 - 48 | 77 | 45 | 24 | 37 | 15 | M8 |
| 42 | 265 | 450 | 126 | 95 | 15 - 55 | 94 | 50 | 26 | 40 | 20 | M8 |
| 48 | 310 | 525 | 140 | 105 | 18 - 62 | 102 | 56 | 28 | 45 | 20 | M8 |

Weitere technische Daten, siehe Seite 37. Further technical data, see page 37.
Laufend aktualisierte Daten finden Sie auf unserer Homepage. For continuously updated data please refer to our website.

Technische Daten
TKN - Drehmoment

Technical Data
TKN - Torque

| | | | | | | | | |
|---------------------------------|----------|----|---|----|---|----|----|----|
| Bestellbeispiel / order example | WKE-D/RS | 28 | B | 15 | B | 20 | 92 | SX |
| Modell / model | | | | | | | | |
| Größe / size | | | | | | | | |
| Nabenausführung / hub version | | | | | | | | |
| Bohrung ØD1 H7 / bore ØD1 H7 | | | | | | | | |
| Nabenausführung / hub version | | | | | | | | |
| Bohrung ØD2 H7 / bore ØD2 H7 | | | | | | | | |
| Zahnkranz / elastomer insert | | | | | | | | |
| Sonderoption / special option | | | | | | | | |

