

# TEK05 series

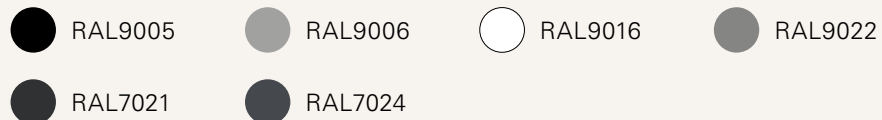
## Innovative Single Motor Desk Frame

### General Features

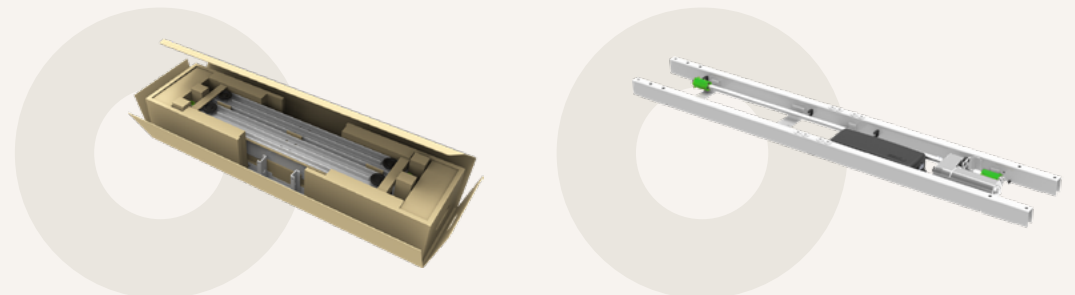
Max. load	90kg
Constant speed	2-Stage Column: 33mm/s
Weight of package	31Kg*
Standby power	<0.1W
USB Chargers (TFA1/TFA3), Wireless Chargers (TWC)	
Multiple control options	
High strength and stability – Steel construction	
Semi-Preassembled – Motor and control box are mounted within the frame	



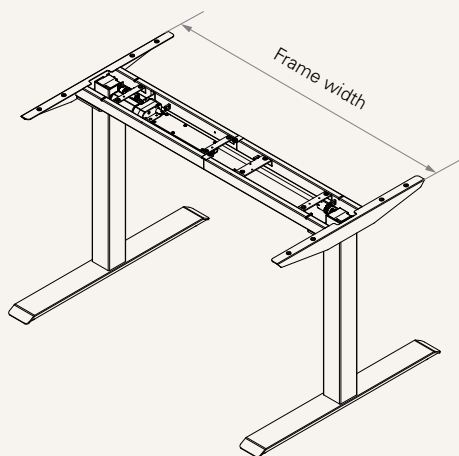
### Color (RAL Classic)



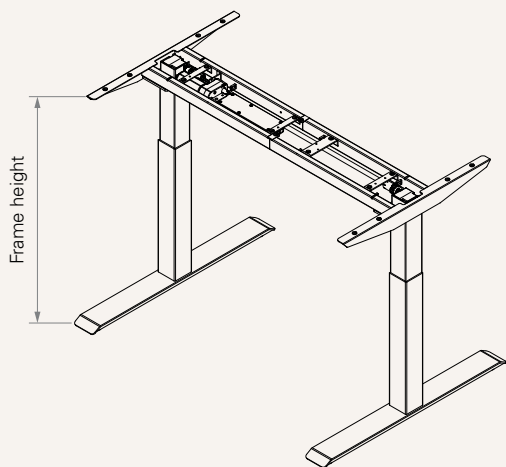
\*For more color options, please consult your sales representative.



**Dimension**



- 2-Stage



**Frame & Work Surface**

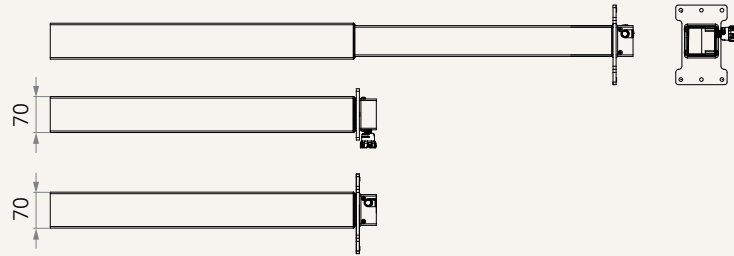
Frame dimensions (mm)	Recommended work surface dimensions (mm)	
Width (mm)	Width (mm)	Depth (mm)
1050~1600	1100~1700	700~1000

**Hight Range**

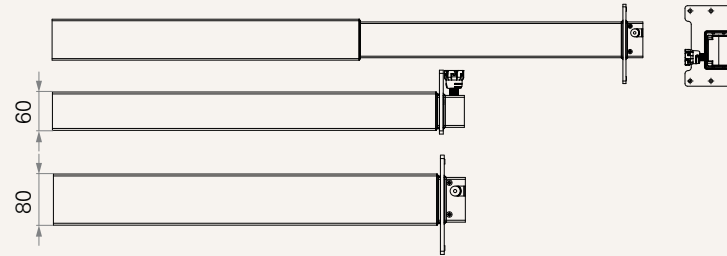
Column type	Frame height (mm)	Stroke (mm)
2-Stage	680~1180	500

**Column Shape**

Square, 2 stages



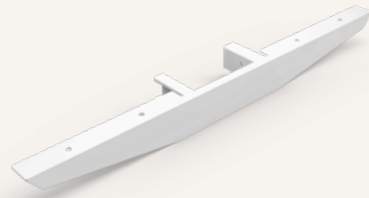
Rectangular, 2 stages



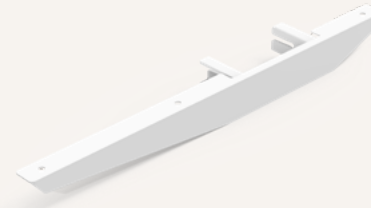
**End Pipe**



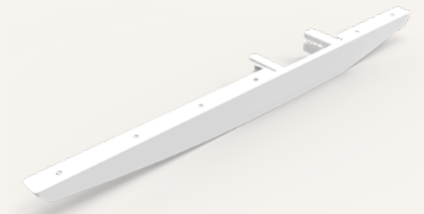
Style A  
(for fixed tabletop)



Style C  
(for C leg, fixed tabletop)



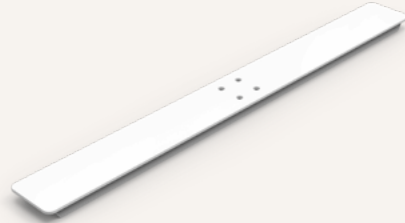
Style C  
(for C leg, fixed tabletop)



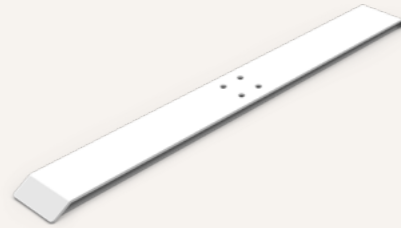
Foot



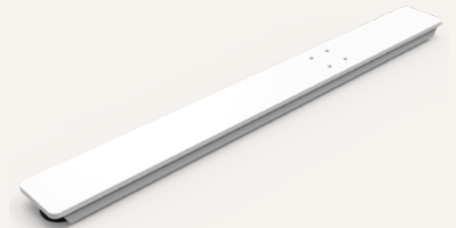
Style A



Style B



Style A, C (for C leg)



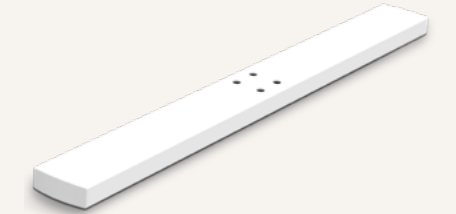
Style B, C (for C leg)



Style C



Style D



Style E



Foot (mm)



Code	Style	Thickness (mm)	Length (mm)
1	A	8	750
2	A	5	750
3	B	5	750
4	B	8	750
6	C	Aluminum extrusion	750
7	D	Tube	750
8	A	5	550
9	A	5	680
C	A	8	550
D	C	Aluminum extrusion	550
F	B	5	550
G	B	5	680
H	B	8	550
L	D	Tube	550
M	A	5	600
N	A	8	680
P	C	Aluminum extrusion	600
V	E	5	750

C-leg			
Code	Style	Thickness (mm)	Length (mm)
5	A	8	750
E	A	8	680
J	B	8	680
K	B	8	750
Q	A	5	580
R	A	5	600
S	A	5	750
T	B	5	580
U	A	8	550

Hand Control



1 = TH37



2 = TFH8



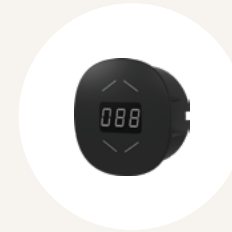
3 = TDH1



4 = TDH2



5 = TDH3



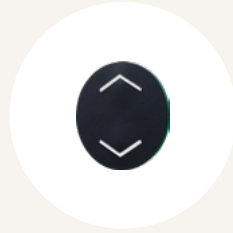
6 = TDH4



7 = TDH5



8 = TDH6



9 = TFH13



B = TH14



C = TFH21



D = TDH8P



E = TDH8



F = TDH8D



G = TDH11P



H = TDH12P



K = TDH16



L = TDH6PR



M = TDH5PR



N = TDH13P



P = TDH15



Q = TDH18P



R = TDH19P



S = TDH20P

---

**Hand Control**



T = TDH9P



U = TDH27P



V = TDH24P

---

**Accessories (optional)**



TCS1

TCS1 is a collision sensor based on t-touch technology which does not require any additional hardware upgrades.



TFA1

A charger with 2 USB ports. Can be mounted on the table top.



TFA3

A charger with 2 USB ports. Can be mounted to the desk front side.



TWC

Designed for wireless charging of mobile devices. Can be mounted on the table top.

<b>Load and Speed</b>	B = Load: 90Kg, Speed: 0-90Kg 33/mms			
<b>Stroke &amp; Retracted Length (mm)</b>	Stroke: 500 Retracted length: 680			
<b>Foot (mm)</b>	<a href="#">See page 4</a>			
<b>Color</b>	1 = Black (RAL 9005), wiper: black 2 = Grey (RAL9006), wiper: black 3 = White (RAL 9016), wiper: black	4 = Special grey (RAL 9022), wiper: black 6 = Grey (RAL9006), wiper: grey 7 = White (RAL 9016), wiper: white	8 = Special grey (RAL 9022), wiper: grey B = Matte black (RAL 7021), wiper: black C = Graphite grey (RAL 7024), wiper: black	D = Matte black (RAL 7021), wiper: matte black
<b>TC Model</b>	1 = TC11	2 = TC11P		
<b>Hand Control</b>	<a href="#">See page 6-7</a>			
<b>End Pipe (mm)</b> <a href="#">See page 3</a>	1 = Style A, fixation holes, E1 & E2: 600, Standard 2 = Style C, fixation holes, E1 & E2: 580, for C-leg		3 = Style C, fixation holes, E1 & E2: 650, for C-leg 4 = Style C, fixation holes, E1 & E2: 700, for C-leg	
<b>Desk Frame (mm)</b>	1 = Adjustable frame, W: 1050-1600; U type connection pipe, standard 3 = Fixed frame 1160		4 = Fixed frame 1360 5 = Fixed frame 1560	
<b>Column Shape</b> <a href="#">See page 3</a>	3 = Square, 2 stage, thickness 1.5mm, without wiper fixing holes at sides			
<b>Bracket</b>	0 = Without 1 = Direction 1, standard bracket	3 = Direction 3, standard bracket 5 = Direction 1, triangle bracket	7 = Direction 3, triangle bracket	
<b>Assembly Manual</b>	0 = Without C = Chinese, TiMOTION logo, Black / White printing	E = English, TiMOTION logo, Black / White printing 1 = Chinese, TiMOTION logo, colour printing	2 = English, TiMOTION logo, colour printing 3 = Chinese, No logo, Black / White printing 4 = English, No logo, Black / White printing	5 = Chinese, No logo, colour printing 6 = English, No logo, colour printing

### Terms of Use

The user is responsible for determining the suitability of TiMOTION products for a specific application. TiMOTION products are subject to change without prior notice.