

TEK26_{series}

L-Shaped Three Leg Desk Frame

General Features

Max. load	120kg or 150kg*
Constant speed	3-Stage Column: Up to 38mm/s* 2-Stage Column: Up to 31mm/s*
Frame orientation	L-Shape
Weight of package	49.4kg
Standby power	< 0.1W
Accessories	USB Chargers: TFA1/3 Anti-Collision Sensor: TCS1 Wireless Chargers: TWC

Multiple column and control options

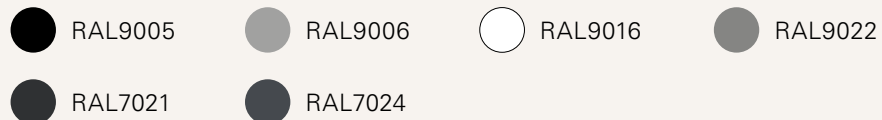
High strength and stability - Steel construction

Modular design - Easily change the TEK01 rectangular desk frame into the L shaped desk

*It varies upon the selection of components.

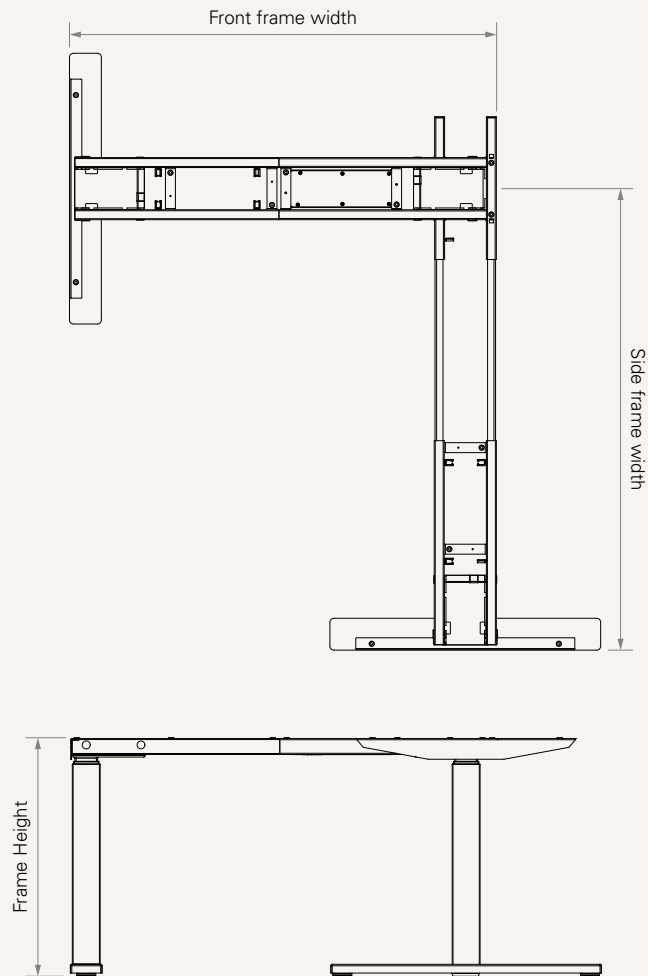


Color (RAL Classic)



*For more color options, please consult your sales representative.

Dimension



Frame & Work Surface

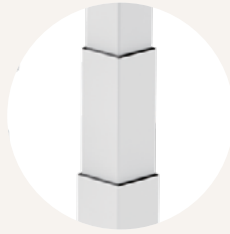
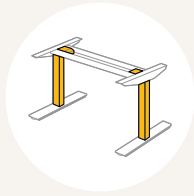
Frame Type	Frame dimensions (mm)		Recommended work surface dimensions (mm)	
	Width (mm)	Depth (mm)	Width (mm)	Depth (mm)
Front-Long	1071~1821	1100~1800	1100~1800	700~1000
Front-Short	1071~1721	1100~1800	1100~1800	700~1000
Side	1160~1485	-	-	-

Hight Range

Column type	Frame height (mm)	Stroke (mm)
3-Stage	630~1280	650
3-Stage (M)	600~1260	660
3-Stage (S)	560~1220	660
2-Stage	680~1180	500

TL Model

• 3-Stage



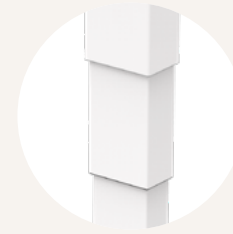
TL4S
Square
70 x 70 mm



TL31S
Rectangular
90 x 60 mm



TL33S
Rectangular
83 x 53 mm



TL33SR
Rectangular
83 x 53 mm

• 2-Stage



TL13S
Square
70 x 70 mm



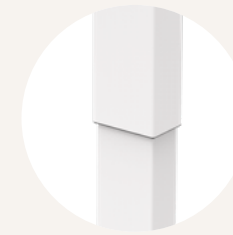
TL14S
Round
ø70 mm



TL30S
Rectangular
90 x 60 mm



TL32S
Rectangular
83 x 53 mm

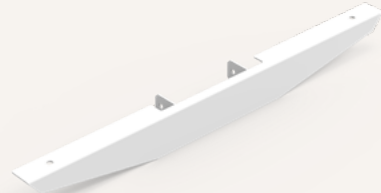


TL32SR
Rectangular
83 x 53 mm

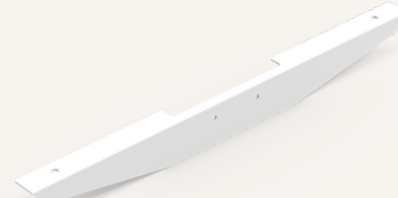
End Pipe



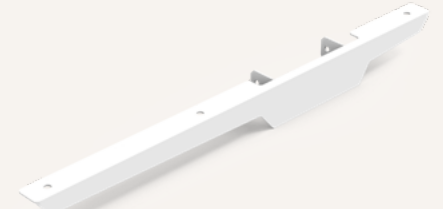
Style A
(Fixation holes for tabletop)



Style A1
(Fixation holes for tabletop)



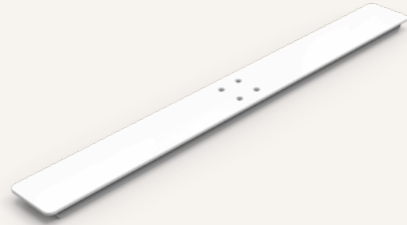
Style B, for C-leg
(Fixation holes for tabletop)



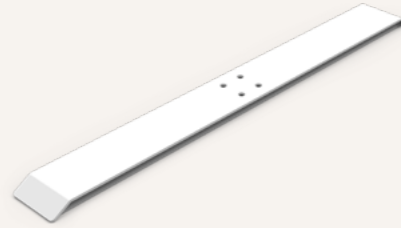
Foot



Style A



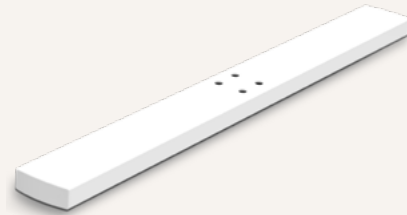
Style B



Style C



Style D



Style E



Style F



Style G



Style H



Style J



Foot (mm)



Code	Style	Frame type	Length (mm)
0	-	Without	-
AT1	A	T	750
AT2	A	T	680
AT4	A	T	600
AT6	A	T	550
AC1	A	C	750
AC4	A	C	600
AC5	A	C	580
BT1	B	T	750
BT2	B	T	680
BT6	B	T	550
BC1	B	C	750
BC2	B	C	680
BC5	B	C	580
CT1	C	T	750
CT2	C	T	680
CT4	C	T	600
CT6	C	T	550
DT1	D	T	750

Code	Style	Frame type	Length (mm)
DT6	D	T	550
ET1	E	T	750
FT2	F	T	680
GT2	G	T	680
HT2	H	T	680
JC3	J	C	650
KT1	K	T	750
KT2	K	T	680
KT6	K	T	550
KC1	K	C	750
KC2	K	C	680
KC6	K	C	550
LT1	L	T	750
LT6	L	T	550
LC1	L	C	750
LC2	L	C	680
010	0	1	0
020	0	2	0

Hand Control



1 = TH37



2 = TFH8



3 = TDH1



4 = TDH2



5 = TDH3



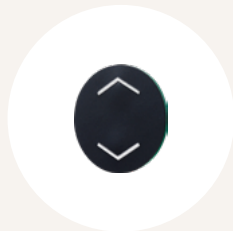
6 = TDH4



7 = TDH5



8 = TDH6



9 = TFH13



B = TH14



C = TFH21



D = TDH8P



E = TDH8



F = TDH8D



G = TDH11P



H = TDH12P



K = TDH16



L = TDH6PR



M = TDH5PR



N = TDH13P



P = TDH15



Q = TDH18P



R = TDH17



S = TDH20P

Hand Control



T = TDH9P



U = TDH27P

Accessories (optional)



TCS1

TCS1 is a collision sensor based on t-touch technology which does not require any additional hardware upgrades.



TFA1

A charger with 2 USB ports. Can be mounted on the table top.



TFA3

A charger with 2 USB ports. Can be mounted to the desk front side.



TWC

Designed for wireless charging of mobile devices. Can be mounted on the table top.

TL Model See page 3	004S = TL4S 013S = TL13S	030S = TL30S 031S = TL31S	032S = TL32S 32SR = TL32SR	033S = TL33S 33SR = TL33SR
Foot F1 & F2 (mm)	See page 5-6			
Foot F3 (mm)	010 = Foot cap + Big shoe, standard 020 = Big shoe (requires column with extended outer tube)		Other foot options, See page 5-6	
Color	1 = Black (RAL 9005) 2 = Grey (RAL 9006)	3 = White (RAL 9016) 4 = Special grey (RAL 9022)	5 = Slate grey (RAL 7015) 6 = Matte Black (RAL7021)	7 = Graphite grey (RAL7024)
TC	0 = Without	1 = TC16	2 = TC16P	
Hand Control	See page 7-8			
End pipe E1&E2 (mm) See page 4	1 = Style A, fixation holes, fixed with outer pipe, E1&E2: 550 2 = Style A1, fixation holes, fixed with motor house, E1&E2: 550		3 = Style A1, fixation holes, fixed with motor house, E1&E2: 360 7 = Style B, fixation holes, fixed with outer pipe, E1&E2: 580, for C-leg	
Front Desk Frame (mm)	1 = Adjustable frame, outer pipe 25*40, W: 1071-1721		2 = Adjustable frame, outer pipe 25*40, W: 1071-1821	
Side Desk Frame (mm)	1 = Normal, outer pipe 25*40, L: 1160-1485			
Assembly Manual	0 = Without C = Chinese, TiMOTION logo, Black / White printing E = English, TiMOTION logo, Black / White printing 1 = Chinese, TiMOTION logo, colour printing 2 = English, TiMOTION logo, colour printing		3 = Chinese, No logo, Black / White printing 4 = English, No logo, Black / White printing 5 = Chinese, No logo, colour printing 6 = English, No logo, colour printing	

Terms of Use

The user is responsible for determining the suitability of TiMOTION products for a specific application. TiMOTION products are subject to change without prior notice.