

TEKaiir_{series}

Lightweight Dual Motor Desk Frame

General Features

Max. load	100kg
Constant speed	2-Stage Column: 31mm/s* 3-Stage Column: 38mm/s*
Weight of package	25Kg
Standby power	< 0.1W
Accessories	USB Chargers (TFA1/TFA3), Anti-Collision Sensor (TCS1), Wireless Chargers (TWC)

Unique lightweight frame design

Light in weight, solid in structure

Pre-assembled frame kit – Quick and effortless assembly

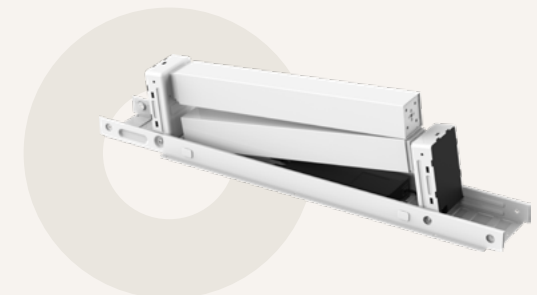
*It varies upon the selection of components.



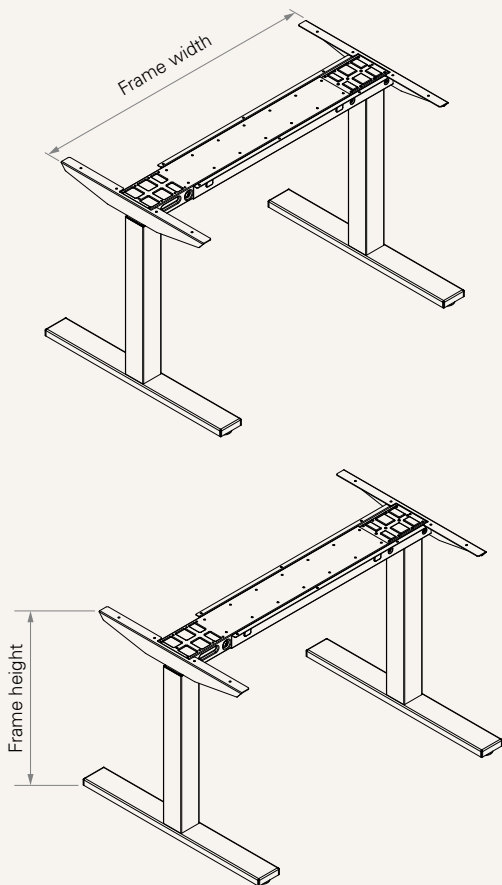
Color (RAL Classic)



*For more color options, please consult your sales representative.



Dimension



Frame & Work Surface

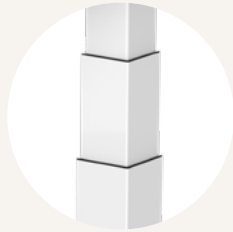
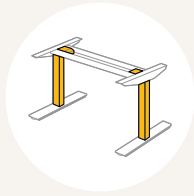
Frame dimensions (mm)	Recommended work surface dimensions (mm)	
Width (mm)	Width (mm)	Depth (mm)
Normal: 946~1546	1000~1600	600~800
Extended: 1040~1740	1000~1600	600~800

Hight Range

Column type	Frame height (mm)	Stroke (mm)
3-Stage	630~1280	650
3-Stage (M)	600~1260	660
3-Stage (S)	560~1220	660
2-Stage	680~1180	500

TEL Model

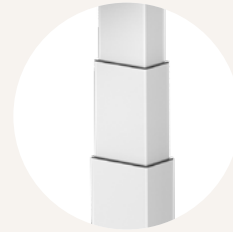
• 3-Stage



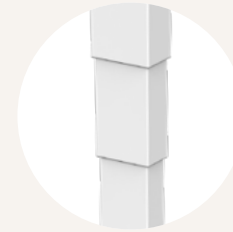
TEL01-MS
Square
70 x 70 mm



TEL03-MS
Round
ø70 mm



TEL05-MS
Rectangular
83 x 53 mm



TEL05-MR
Rectangular
83 x 53 mm

• 2-Stage



TEL02-MS
Square
70 x 70 mm



TEL04-MS
Round
ø70 mm



TEL06-MS
Rectangular
83 x 53 mm

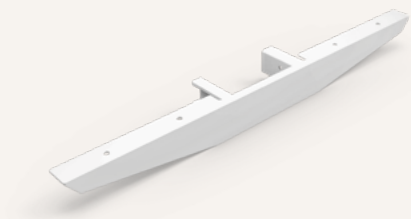


TEL06-MR
Rectangular
83 x 53 mm

End Pipe



Style A
(for fixed tabletop)



Foot



Style H



Foot (mm)



Code	Style	Frame type	Length (mm)
0	-	Without	-
HT2	H	T	680
HT4	H	T	600
HT6	H	T	550

Hand Control



1 = TH37



2 = TFH8



3 = TDH1



4 = TDH2



5 = TDH3



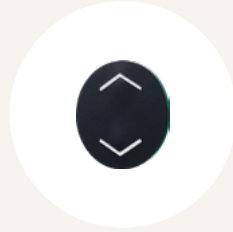
6 = TDH4



7 = TDH5



8 = TDH6



9 = TFH13



B = TH14



C = TFH21



D = TDH8P



E = TDH8



F = TDH8D



G = TDH11P



H = TDH12P



K = TDH16



L = TDH6PR



M = TDH5PR



N = TDH13P



P = TDH15



Q = TDH18P



R = TDH17



S = TDH20P

Hand Control



T = TDH9P



U = TDH27P



V = TDH24P



W = TDH29



X = TDH5C

Accessories (optional)



TCS1

TCS1 is a collision sensor based on t-touch technology which does not require any additional hardware upgrades.



TFA1

A charger with 2 USB ports. Can be mounted on the table top.



TFA3

A charger with 2 USB ports. Can be mounted to the desk front side.



TWC

Designed for wireless charging of mobile devices. Can be mounted on the table top.

TEL Model See page 3	01MS = TEL01-MS	02MS = TEL02-MS	03MS = TEL03-MS	04MS = TEL04-MS	05MS = TEL05-MS	05MR = TEL05-MR	06MS = TEL06-MS	06MR = TEL06-MR
Foot (mm)	See page 4							
Color	1 = Black (RAL 9005)		2 = Grey (RAL 9006)		3 = White (RAL 9016)		4 = Special grey (RAL 9022)	
TC Model	0 = Without		1 = TC15S (Quick Release version)					
Hand Control	See page 5-6							
End Pipe (mm) See page 4	1 = Style A, fixation holes, fixed with desk frame, E1 & E2: 550 (TEK32 only)							
Desk Frame (mm)	1 = Normal, W: 946-1546			2 = Extended, W: 1040-1740				
Assembly Manual	0 = Without				3 = Chinese, No logo, Black / White printing			
	C = Chinese, TiMOTION logo, Black / White printing				4 = English, No logo, Black / White printing			
	E = English, TiMOTION logo, Black / White printing				5 = Chinese, No logo, colour printing			
	1 = Chinese, TiMOTION logo, colour printing				6 = English, No logo, colour printing			
	2 = English, TiMOTION logo, colour printing							

Terms of Use

The user is responsible for determining the suitability of TiMOTION products for a specific application. TiMOTION products are subject to change without prior notice.