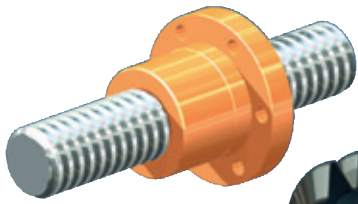
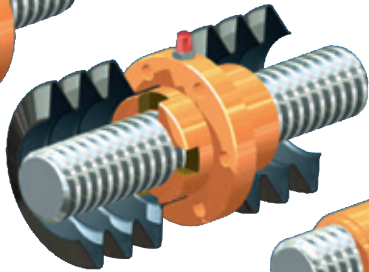


**R Accessories**  
Nuts | rotating version

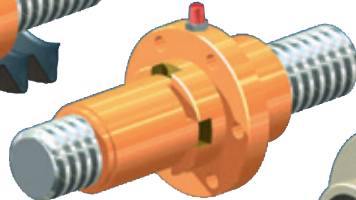


**Flange nut FM**  
Standard nut for simple applications

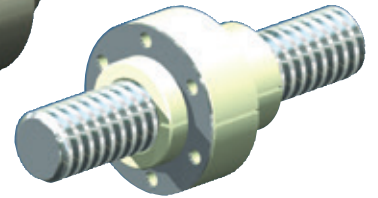
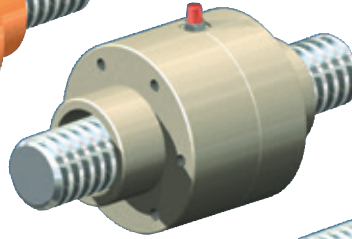


**Duplex nut DM**  
- Bellows can be attached both sides  
- Uniform Ø on gearbox neck, nut and opposed bearing plate  
- Grease nipple or connection to central lubrication or lubricator

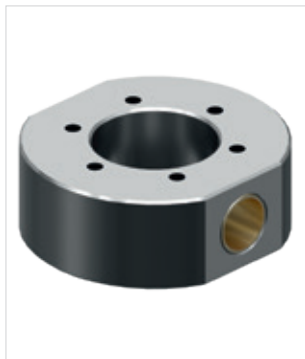
**Safety nut SIFA**  
In combination with duplex nut or self-aligning nut



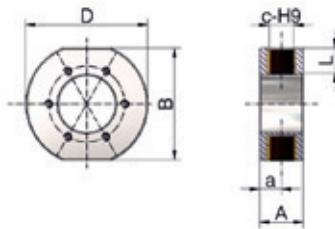
**Self-aligning nut PM**  
- Angular compensation up to max. 3°  
- Bellows can be attached both sides  
- Uniform Ø on gearbox neck, nut and opposed bearing plate  
- Grease nipple or connection to central lubrication or lubricator



**Greaseless nut FFDM**  
- Specially suitable for dry running (such as textiles, foodstuffs, chemicals,...)  
- Bellows can be attached both sides  
- Reinforced with a stainless steel washer



**Cardan adapters DMA for duplex nut DM**



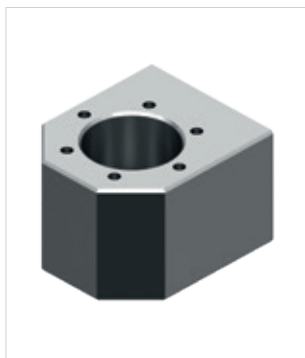
Code	B	D	c-H9	L	A	a	kg
ZE-5-DMA	72	78	16	15	30	15	1
ZE-10-DMA	72	78	16	15	30	15	0,9
ZE-25-DMA	90	98	20	20	36	18	1,4
ZE-35-DMA	100	116	28	15	46	23	2,3
ZE-50-DMA	100	116	30	15	46	23	2,3
ZE-100-DMA	140	156	40	25	60	30	4,8
ZE-150-DMA	145	160	50	25	76	38	6,8
ZE-200-DMA	175	192	50	25	80	40	10,3
Z-250-DMA	185	206	60	30	90	45	12,7

Material: steel, corrosion-resistant; pivot bearing: Bronze, PTFE coated

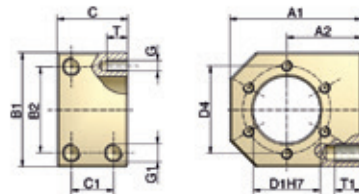


**Main direction of loading**

Select the main direction of loading so that tensile loads on the nut are avoided



**Driving flange TRMFL for flange nut FM**



Code	für FM	A1	A2max <sup>1)</sup>	A2min <sup>1)</sup>	B1	B2	C	C1	G1xT	D1	D4	GxT	kg
TRMFL-18x4 <sup>2)</sup>	Tr18x4	60	35	25	50	34	40	24	M8x15	28	38	M5x10	0,7
TRMFL-20x4	Tr20x4	68	37,5	29	58	39	40	24	M8x15	32	45	M6x12	0,9
TRMFL-30x6	Tr30x6	75	42,5	32,5	65	49	40	24	M10x15	38	50	M6x12	1,1
TRMFL-40x7	Tr40x7	120	70	50	100	76	65	41	M14x25	63	78	M8x14	4,5

Material: steel, corrosion-resistant

1) Supplied ex-works with size A2max! Can be machined by the customer to A2min.

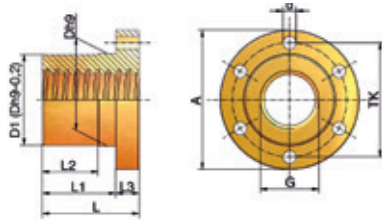
2) Also suitable for GSZ-2-FM (Tr 16x4)

# Accessories

## Nuts | rotating version



Flange nut FM



Code	G	D1*Dh9	TK	A	d (6x)	L	L1	L2	L3	kg
GSZ-2-FM	Tr16x4	28	38	48	6	35	23	15	12	0,2
ZE-5-FM	Tr18x4	28	38	48	6	35	23	15	12	0,2
ZE-10-FM	Tr20x4	32	45	55	7	44	32	24	12	0,3
ZE-25-FM	Tr30x6	38	50	62	7	46	32	24	14	0,4
ZE-35/50-FM	Tr40x7	63	78	95	9	66	50	38	16	1,7
ZE-100-FM	Tr55x9	85	108	130	11	90	70	54	20	4
ZE-150-FM	Tr60x9	90	116	140	13	100	75	54	25	5,5
ZE-200-FM	Tr70x12	110	143	175	17	120	90	60	30	10,2
Z-250-FM	Tr80x16	120	153	185	17	130	95	65	35	14,3
Z-350-FM	Tr100x16	145	189	230	23	150	115	75	40	20,4
Z-500-FM	Tr120x16	170	214	255	23	170	130	80	50	28,9
Z-750-FM	Tr140x20	200	252	289	23	210	160	100	60	48
Z-1000-FM	Tr160x20	250	300	350	26	260	200	120	70	96,2

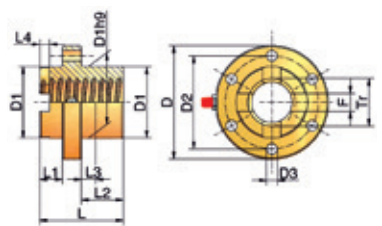
Material: 2.1090.01 (RG7-bronze)

Quality: 7H DIN 103. Right-handed (left-handed, double pitch on request)

\*D1=Dh9-0,2 mm



Duplex nut DM



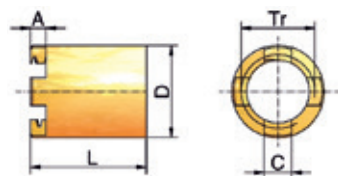
Code	Tr	D	D1	D2	D3	L	L1	L2	L3	L4	F	kg
GSZ-2-DM	Tr16x4	49	26	40*	5,5*	45	13	20	8	6	6	0,3
ZE-5-DM	Tr18x4	52	29	40	6	45	13	20	8	6	6	0,3
ZE-10-DM	Tr20x4	68	39	54	7	45	13	20	8	6	8	0,6
ZE-25-DM	Tr30x6	79	46	61	7	50	13	23	8	7	12	0,8
ZE-35/50-DM	Tr40x7	95	60	78	9	70	18	36	12	8,5	15	1,5
ZE-100-DM	Tr55x9	130	85	108	11	90	18	54	18	10	20	4,1
ZE-150-DM	Tr60x9	140	90	116	13	115	20	75	20	10	20	5,3
ZE-200-DM	Tr70x12	175	110	143	17	130	25	75	30	14	25	10,3
Z-250-DM	Tr80x16	185	120	153	17	140	25	85	30	14	25	12,2
Z-350-DM	Tr100x16	230	145	189	23	160	25	100	35	14	24	21,6
Z-500-DM	Tr120x16	255	170	214	23	180	30	110	40	14	30	30,5
Z-750-DM	Tr140x20	289	200	252	23	220	30	140	50	18	30	58,3
Z-1000-DM	Tr160x20	350	250	300	26	320	50	210	70	18	35	155

Material: 2.1090.01 (RG7-bronze); Quality: 7H DIN 103 right-handed (left-handed, double pitch on request); Threaded grease nipple, up to ZE-50 G1/8", from ZE-100 G1/4"

\*only 4 drill holes Ø 5,5mm



Safety nut SIFA-R



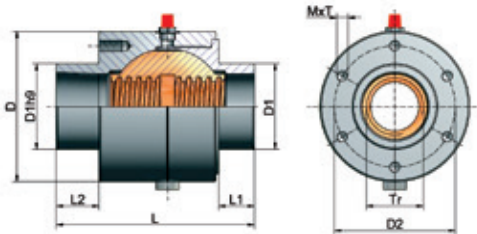
Code	Tr	A	C	D	L	kg
GSZ-2-SIFA-R	Tr16x4	6	6	22	28	0,05
ZE-5-SIFA-R	Tr18x4	6	6	24	28	0,1
ZE-10-SIFA-R	Tr20x4	6	8	28	42	0,1
ZE-25-SIFA-R	Tr30x6	7	12	38	47,5	0,2
ZE-35/50-SIFA-R	Tr40x7	8,5	15	50	67	0,5
ZE-100-SIFA-R	Tr55x9	10	20	65	87	1,1
ZE-150-SIFA-R	Tr60x9	10	20	70	100	1,2
ZE-200-SIFA-R	Tr70x12	14	25	95	110	3,8
Z-250-SIFA-R	Tr80x16	14	25	100	115	3,3
Z-350-SIFA-R	Tr100x16	14	24	120	115	4,07
Z-500-SIFA-R	Tr120x16	14	30	135	128	6,02
Z-750-SIFA-R	Tr140x20	18	30	170	151	13,8
Z-1000-SIFA-R	Tr160x20	18	35	190	186	19,8

Material: RG7

**R Accessories**  
Nut | rotating version

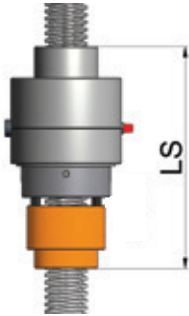


**Self-aligning nut PM**



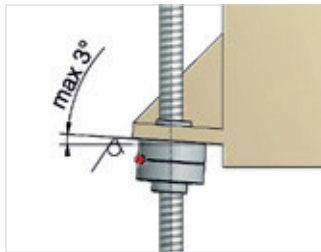
**Technical data**

Trapezoidal screw: DIN 103, quality 7H, right-handed  
 Screwed grease nipple: Thread 1/8" / 1/4" ab Tr 40x7  
 Material:  
 Housing: GG25 (Grey cast iron)  
 Spherical nut: Rg7 (Bronze)  
 Safety nut SIFA: is available for the self-aligning nut on request



Code	Thread Tr dxP	D	D1	D2	M x T	L	L1	L2	LS*	kg
ZE-5-PM	Tr18x4	52	29	40	M5x12	78	13	21	123	0,7
ZE-10-PM	Tr20x4	74	39	60	M6x12	83	13	24	128	1,5
ZE-25-PM	Tr30x6	88	46	70	M6x12	95	13	27	158	2,4
ZE-35/50-PM	Tr40x7	105	60	85	M8x16	129	15	30	212	5,1
ZE-100-PM	Tr55x9	148	85	120	M10x20	190	15	45	298	15,1
ZE-150-PM	Tr60x9	165	90	125	M12x24	210	15	45	330	21,9
Z-250-PM	Tr80x16	225	120	170	M16x32	224	20	40	369	47
Z-350-PM	Tr100x16	280	145	215	M20x40	275	20	40	455	94

\*Overall length PM incl. safety nut SIFA

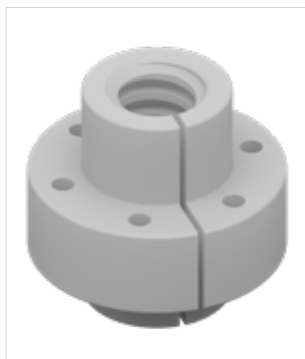


**Application**

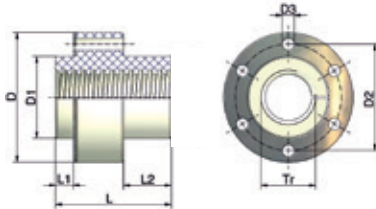
(Welded) fabrications often exhibit angular errors, which lead to rapid wear of the trapezoidal screw nuts. The self-aligning nut PM can compensate small angular errors on the attachment face up to maximum +/-3°. A large grease reservoir increases the maintenance intervals and extends the service life

**CAUTION**

Self-aligning nuts cannot compensate parallelism errors between screws or between screws and guides. Take care to ensure precise alignment. The attachment faces for the gearboxes must therefore be exactly at right angles to the guides.



**Greaseless nut FFDM**



Code	Tr	D	D1 <sup>2)</sup>	D2	D3	L	L1	L2	kN max. load	kg
ZE-5-FFDM	Tr18x4	52	29	40	6	53	11	20	1	0,1
ZE-10-FFDM	Tr20x4	68	39	54	7	53	11	20	2	0,1
ZE-25-FFDM	Tr30x6	79	46	61	7	59	11	23	5	0,2
ZE-35/50-FFDM	Tr40x7	95	60	78	9	85	13	35	7	0,4

Nut material: Plastic, high-performance ploymer

Steel ring material: stainless steel

Quality: 7H DIN 103, right-handed

1) As approximate value, depending on the stroke speed and ambient temperature

2) Connection bore for D1 +0,2 mm for thermal expansion

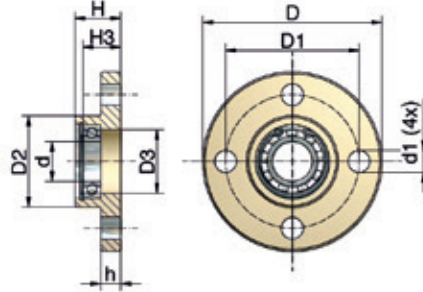


## Accessories

### Opposed bearing plate | rotating version



Opposed bearing plate GLP



The opposed bearing plate increases the smoothness of operation and the resistance of the screw to buckling. Allow 5 mm at the end of the screw for length compensation. The ball bearing is already mounted on delivery.

Code	ØD	ØD1	ØD2	ØD3	Ød	Ød1	h	H	H3	Bearing	Si-Ring	kg
GSZ-2-GLP	50	40	26	19	10	5,5	6	16	12	61900.2RS	J 22	0,05
ZE-5-GLP	65	48	29	20	12	9	7	20	13	61901.2RS	J 24	0,2
ZE-10-GLP	80	60	39	28	15	11	8	21	17	6002.2RS	J 32	0,5
ZE-25-GLP	90	67	46	32	20	11	10	23	19	61904.2RS	J 37	0,5
ZE-35/50-GLP	110	85	60	42	25	13	15	30	22	6005.2RS	J 47	1,1
ZE-100-GLP	150	117	85	60	40	17	20	50	35	6008.2RS	J 68	2,9
ZE-150-GLP	170	130	90	68	45	21	25	50	31	6009.2RS	J 75	4
ZE-200-GLP	200	155	110	83	50	26	30	60	50	2x6210.2RS	J 90	7,2
Z-250-GLP	210	165	120	85	60	26	30	60	50	2x6012.2RS	J 95	6,9
Z-350-GLP	265	205	145	110	80	27	32	65	54	2x6016.2RS	J125	11,5
Z-500-GLP	310	240	170	130	95	38	40	100	60	2x6019.2RS	J145	24
Z-750-GLP	350	280	200	168	100	6x32	40	100	83	2x6020.2RS	J180	32

Material: steel, corrosion-resistant; up to ZE-200 stainless bearings