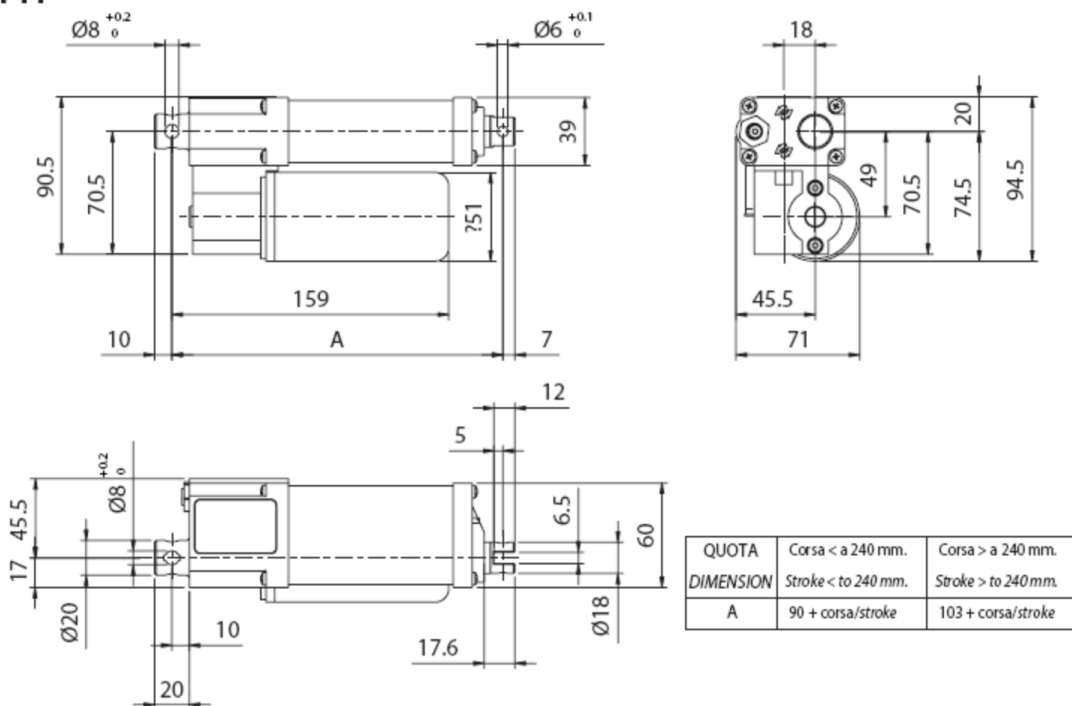
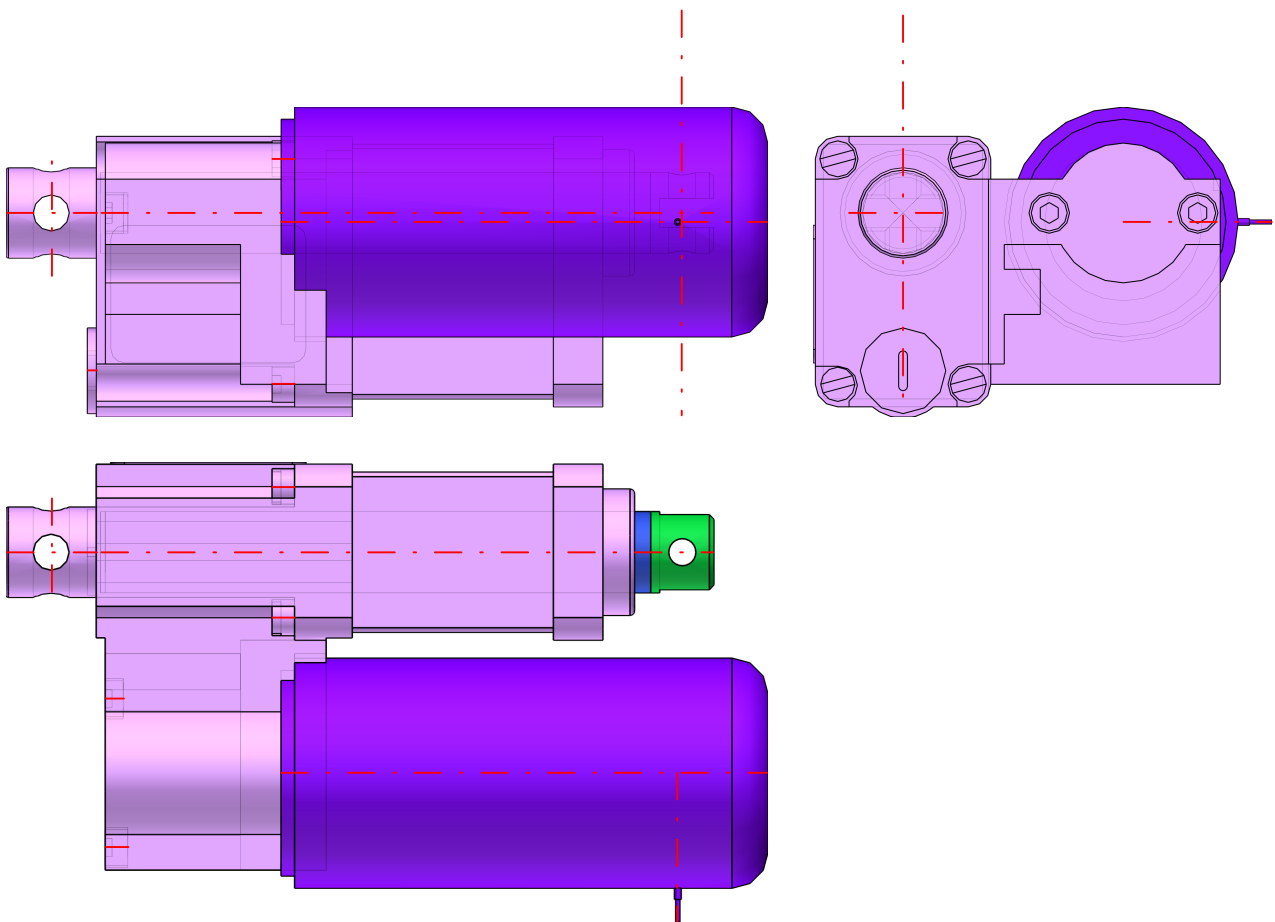


ALI1-PF





IDNR (Type of actuator)	ALI1-P
C (corsa / mm)	50
CC (Push rod position / mm)	0
VL (Versione)	M03
FMAX (/ N)	2000
VEL (/ mm/s)	8.3
GR (Gr MOTORE)	40
MOT (Motor)	24 V
NOTE (Note tensione motore)	-
EN (Encoder)	No
ENX (Descrizione Encoder)	-
COEL ()	C01
CABL (Note cavo)	CAVO LUNGH. 500 mm
DA (Antirotation device)	No
AP (Rear end)	P1
AA (Front end)	A2
OPZ2 (Stainless steel)	No
OPZ2X (Descrizione Inox)	-
OPZ3 (Bronze wheel)	No
OPZ5 (Manual driving)	No
OPZ4 (Painting)	No
OPZ4X (Descrizione verniciatura)	-

Kusovník

N°	Označení	Množství
1	AL11-P/0050/M03/24/C01//P1/A2////////	1
1.1	-d -pf 50 12 0 C01 No 1 2 - - - - - M03	1
1.2	50 1 0 - - 3 corpo-pfg	1
1.3	MMP3	1
1.4	asta_AL1_Pf.50	1
1.5	D2	1