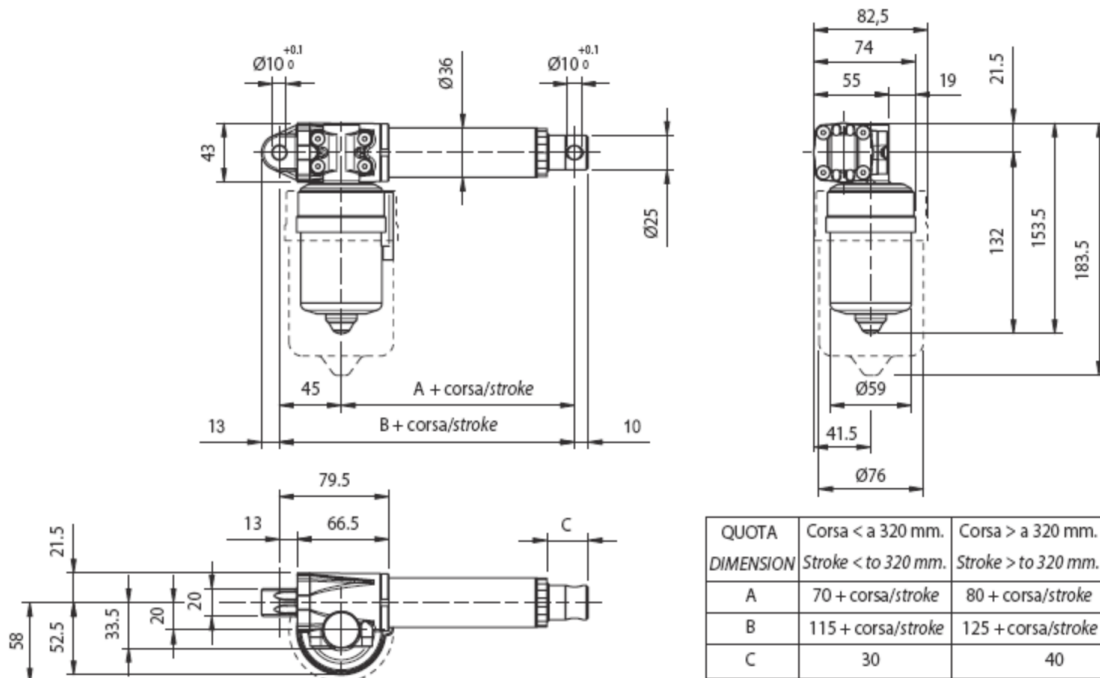
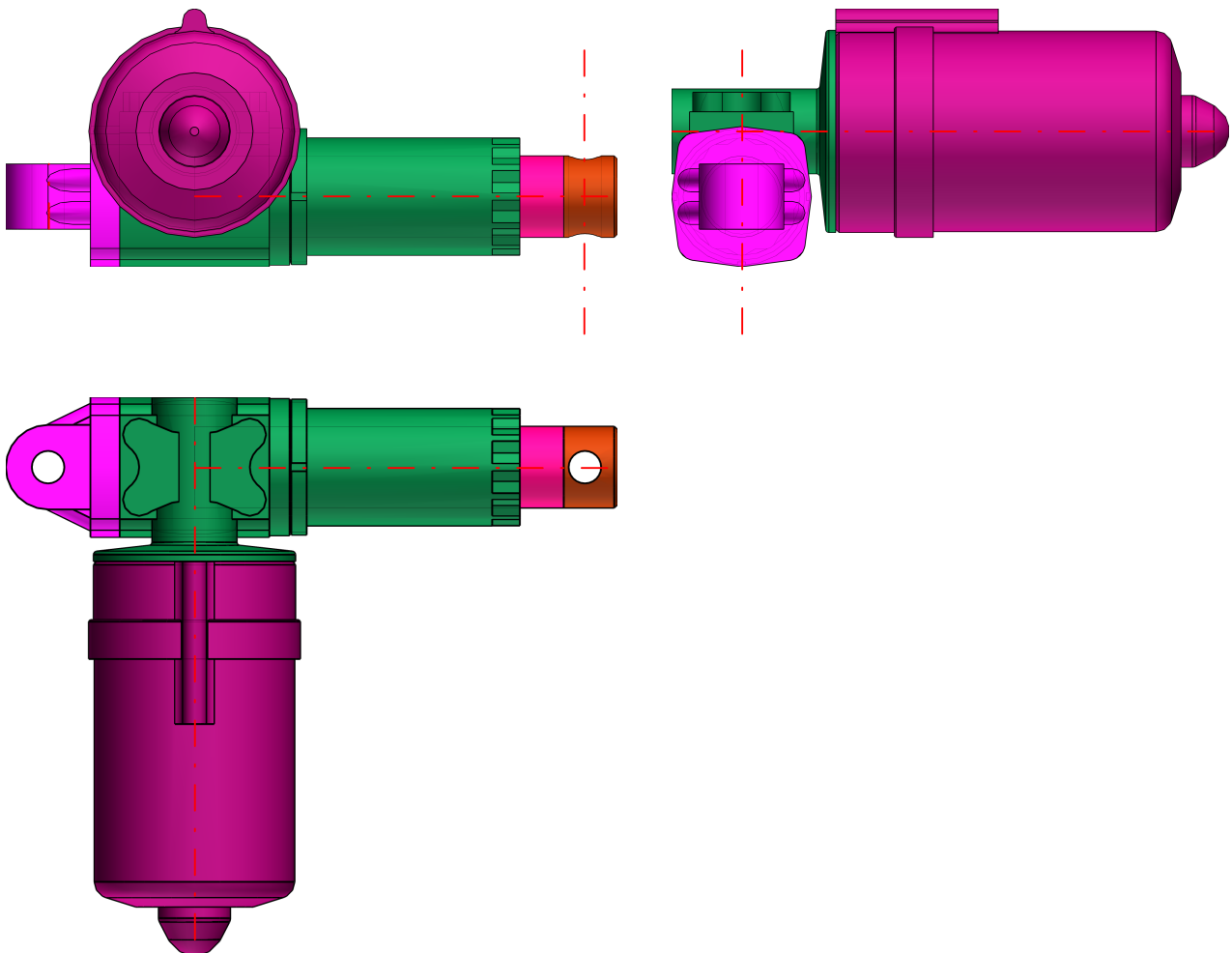


**ALI2 - versione C.C. / D.C. Version**





<b>IDNR (Type of actuator)</b>	ALI2 CC
<b>C (Stroke / mm)</b>	50
<b>CC (Push-rod stroke / mm)</b>	0
<b>VS (Version)</b>	M10
<b>FMAX ( / N)</b>	1100
<b>VEL (Velocità / mm/s)</b>	55
<b>GRM (Gr. MOTORE)</b>	61,5
<b>RPM ( / rpm)</b>	3000
<b>TS1 (Voltage / V)</b>	24 V
<b>TIPOY (Note motore)</b>	-
<b>OM (Motor position / mm)</b>	M0
<b>EN (Encoder)</b>	No
<b>ENX (Descrizione Encoder)</b>	-
<b>DA (Antirotaion device)</b>	No
<b>AP (Attacco Posteriore)</b>	P1
<b>AA (Front end / mm)</b>	A1
<b>OPZ2 (Stainless steel)</b>	No
<b>OPZ2X (Note Inox)</b>	-
<b>OPZ4 (Safety nut)</b>	No
<b>OPZ8 (Bellows)</b>	No
<b>OPZ5 (Guarnizioni in Viton)</b>	No
<b>OPZ6 (Bronze wheel)</b>	No
<b>OPZ3 (Painting)</b>	No
<b>OPZ3X (Note Verniciatura)</b>	-

## Kusovník

N°	Označení	Množství
1	AL12 CC/0050/M10/CC-24-61,5-3000-/M0//P1/A1	1
1.1	50 0 0 corpocc	1
1.2	50	1
1.3	C1	1
1.4	ap_AL2	1
1.5	MMP5	1